

Campus Activity Charts  
Winter 2016 (1161) Week Two Snapshot

**Sutherland**

Student count

Time	Monday	Tuesday	Wednesday	Thursday	Friday	Avg '1161
8	1146	1344	1127	1389	1274	1256
9	1628	1562	1402	1600	1559	1550
10	1852	1720	1548	1726	1766	1722
11	1427	1498	1347	1655	1710	1527
12	1783	1679	1703	1631	1760	1711
13	1902	1705	1590	1684	1732	1723
14	1695	1862	1537	1842	1662	1720
15	187	1633	1395	1823	1421	1292
16	1035	1050	1100	1151	542	976
17	1189	921	802	878	305	819
18	584	479	343	452	40	380
19	341	400	317	229	18	261
20	77	68	161	102	0	102
21	23	42	91	88	0	61
22	0	0	0	0	0	0
Avg	1062	1140	1033	1161	1149	

**Sutherland**

# of classes

Time	Monday	Tuesday	Wednesday	Thursday	Friday	Avg '1161
8	37	51	48	47	46	46
9	58	57	60	55	58	58
10	63	61	61	59	65	62
11	49	56	55	60	67	57
12	61	59	64	62	64	62
13	67	62	63	68	65	65
14	59	64	66	72	64	65
15	8	62	59	72	55	51
16	38	48	45	54	25	42
17	37	46	33	43	14	35
18	25	26	15	25	2	19
19	14	22	12	12	1	12
20	4	4	7	5	0	5
21	2	2	4	4	0	3
22	0	0	0	0	0	0
Avg	37	44	42	46	44	

Notes: FC\_SPACE\_UTL\_VW - Space Utilization by Program View

Removed columns ACAD\_PROG, FC\_PRGM\_ENRL, SCHEDULED\_HRS, FC\_PRGM\_RM\_UTL

Removed activity that began after January 18, 2016

Removed activity that ended before January 18, 2016

Consolidated Sutherland campus buildings (Brealey, Wellness, Fieldhouse, & KTTC)

Course start time that was not on the hour was rounded down (e.g. 8:20 to 8:00)

Course end time that was not on the hour was rounded up (e.g. 8:20 to 9:00)

Top 10% indicated by red cells and text

Avg. '1161 column Top 10% indicated by yellow cells and text

Does not include courses lists in the 'Sched. of Class data missing' tab

Does not include Facilities one off room bookings

Concurrent room bookings included (marginally inflates student count)

Campus Activity Charts  
Winter 2016 (1161) Week Two Snapshot

**Frost**

Student count

Time	Monday	Tuesday	Wednesday	Thursday	Friday	Avg '1161
8	349	669	544	570	566	540
9	942	940	961	1023	992	972
10	789	1031	993	1159	889	972
11	772	698	672	1080	856	816
12	854	973	1124	103	637	738
13	777	842	1009	919	744	858
14	917	1019	881	947	987	950
15	739	818	877	813	876	825
16	319	262	497	276	143	299
17	175	215	216	117	119	168
18	91	68	32	90	0	70
19	75	68	21	48	0	53
20	15	20	0	0	0	18
21	0	0	0	0	0	0
22	0	0	0	0	0	0
Avg	524	586	652	595	681	

**Frost**

# of classes

Time	Monday	Tuesday	Wednesday	Thursday	Friday	Avg '1161
8	11	26	25	26	23	22
9	33	47	46	50	43	44
10	37	49	44	55	46	46
11	36	36	34	50	44	40
12	34	40	44	12	27	31
13	38	44	45	42	35	41
14	41	46	47	44	43	44
15	36	38	40	35	38	37
16	8	7	15	10	6	9
17	6	13	9	15	4	9
18	5	10	3	11	0	7
19	4	10	2	8	0	6
20	1	1	0	0	0	1
21	0	0	0	0	0	0
22	0	0	0	0	0	0
Avg	22	28	30	30	31	

Notes: FC\_SPACE\_UTL\_VW - Space Utilization by Program View

Removed columns ACAD\_PROG, FC\_PRGM\_ENRL, SCHEDULED\_HRS, FC\_PRGM\_RM\_UTL

Removed activity that began after January 18, 2016

Removed activity that ended before January 18, 2016

Consolidated Lindsay campus buildings (Frost, Heavy Equipment, Law & Arbour, Fieldhouse & Resource Drilling)

Course start time that was not on the hour was rounded down (e.g. 8:20 to 8:00)

Course end time that was not on the hour was rounded up (e.g. 8:20 to 9:00)

Top 10% indicated by red cells and text

Avg. '1161 column Top 10% indicated by yellow cells and text

Does not include courses lists in the 'Sched. of Class data missing' tab

Does not include Facilities one off room bookings

Concurrent room bookings included (marginally inflates student count)

Campus Activity Charts  
Winter 2016 (1161) Week Two Snapshot

**Cobourg**

Student count

Time	Monday	Tuesday	Wednesday	Thursday	Friday	Avg '1161
8	0	0	0	0	0	0
9	79	70	88	77	76	78
10	79	70	88	77	76	78
11	79	70	88	77	76	78
12	20	92	16	62	42	46
13	56	92	30	77	42	59
14	56	76	30	92	28	56
15	36	14	14	30	16	22
16	36	14	0	0	16	22
17	0	0	10	0	0	10
18	0	15	10	15	0	13
19	0	15	10	15	0	13
20	0	0	10	0	0	10
21	0	0	0	0	0	0
22	0	0	0	0	0	0
Avg	55	53	36	58	47	

**Cobourg**

# of classes

Time	Monday	Tuesday	Wednesday	Thursday	Friday	Avg '1161
8	0	0	0	0	0	0
9	11	11	12	11	12	11
10	11	11	12	11	12	11
11	11	11	12	11	12	11
12	3	12	10	10	3	8
13	5	12	0	11	3	8
14	5	12	0	12	3	8
15	2	2	0	2	2	2
16	2	2	0	0	2	2
17	1	0	0	0	0	1
18	1	3	0	3	0	2
19	1	3	0	3	0	2
20	1	0	0	0	0	1
21	0	0	0	0	0	0
22	0	0	0	0	0	0
Avg	5	8	12	8	6	

Notes: FC\_SPACE\_UTL\_VW - Space Utilization by Program View

Removed columns ACAD\_PROG, FC\_PRGM\_ENRL, SCHEDULED\_HRS, FC\_PRGM\_RM\_UTL

Removed activity that began after January 18, 2016

Removed activity that ended before January 18, 2016

Course start time that was not on the hour was rounded down (e.g. 8:20 to 8:00)

Course end time that was not on the hour was rounded up (e.g. 8:20 to 9:00)

Top 10% indicated by red cells and text

Avg. '1161 column Top 10% indicated by yellow cells and text

Does not include courses lists in the 'Sched. of Class data missing' tab

Does not include Facilities one off room bookings

Concurrent room bookings included (marginally inflates student count)

Campus Activity Charts  
Winter 2016 (1161) Week Two Snapshot

**Haliburton**

Student count

Time	Monday	Tuesday	Wednesday	Thursday	Friday	Avg '1161
8	0	0	0	0	0	0
9	0	0	15	0	0	15
10	15	0	0	0	0	15
11	15	0	0	0	0	15
12	0	0	0	0	0	0
13	0	0	0	0	0	0
14	0	0	0	0	0	0
15	0	0	0	0	0	0
16	0	0	0	0	0	0
17	0	0	0	0	0	0
18	0	0	0	0	0	0
19	0	0	0	0	0	0
20	0	0	0	0	0	0
21	0	0	0	0	0	0
22	0	0	0	0	0	0
Avg	15		15			

**Haliburton**

# of classes

Time	Monday	Tuesday	Wednesday	Thursday	Friday	Avg '1161
8	0	0	0	0	0	0
9	0	0	1	0	0	1
10	1	0	0	0	0	1
11	1	0	0	0	0	1
12	0	0	0	0	0	0
13	0	0	0	0	0	0
14	0	0	0	0	0	0
15	0	0	0	0	0	0
16	0	0	0	0	0	0
17	0	0	0	0	0	0
18	0	0	0	0	0	0
19	0	0	0	0	0	0
20	0	0	0	0	0	0
21	0	0	0	0	0	0
22	0	0	0	0	0	0
Avg	1		1			

Notes: FC\_SPACE\_UTL\_VW - Space Utilization by Program View

Removed columns ACAD\_PROG, FC\_PRGM\_ENRL, SCHEDULED\_HRS, FC\_PRGM\_RM\_UTL

Removed activity that began after January 18, 2016

Removed activity that ended before January 18, 2016

Course start time that was not on the hour was rounded down (e.g. 8:20 to 8:00)

Course end time that was not on the hour was rounded up (e.g. 8:20 to 9:00)

Top 10% indicated by red cells and text

Avg. '1161 column Top 10% indicated by yellow cells and text

Does not include courses lists in the 'Sched. of Class data missing' tab

Does not include Facilities one off room bookings

Concurrent room bookings included (marginally inflates student count)

Campus Activity Charts  
Winter 2016 (1161) Week Two Snapshot

**Off**

Student count

Time	Monday	Tuesday	Wednesday	Thursday	Friday	Avg '1161
8	115	475	412	168	178	270
9	143	475	412	128	200	272
10	143	503	441	177	206	294
11	172	533	490	263	219	335
12	137	503	536	156	219	310
13	142	463	412	149	178	269
14	143	491	412	144	192	276
15	143	520	440	167	272	308
16	193	479	463	116	228	296
17	115	451	412	116	178	254
18	0	75	90	64	84	78
19	0	75	90	64	84	78
20	0	0	0	0	0	0
21	0	0	0	0	0	0
22	0	0	0	0	0	0
Avg	145	420	384	143	187	

**Off**

# of classes

Time	Monday	Tuesday	Wednesday	Thursday	Friday	Avg '1161
8	4	9	6	9	8	7
9	5	9	6	7	9	7
10	5	10	7	9	9	8
11	6	12	9	13	10	10
12	5	11	0	9	10	9
13	5	8	0	7	8	7
14	5	10	0	8	9	8
15	5	11	0	9	12	9
16	7	8	0	6	10	8
17	4	8	0	6	8	7
18	0	3	0	4	4	4
19	0	3	0	4	4	4
20	0	1	0	0	0	1
21	0	0	0	0	0	0
22	0	0	0	0	0	0
Avg	5	8	7	8	8	

Notes: FC\_SPACE\_UTL\_VW - Space Utilization by Program View

Removed columns ACAD\_PROG, FC\_PRGM\_ENRL, SCHEDULED\_HRS, FC\_PRGM\_RM\_UTL

Removed activity that began after January 18, 2016

Removed activity that ended before January 18, 2016

Consolidated Off campus buildings (Off, PRHC, PTBOMUSEUM)

Course start time that was not on the hour was rounded down (e.g. 8:20 to 8:00)

Course end time that was not on the hour was rounded up (e.g. 8:20 to 9:00)

Top 10% indicated by red cells and text

Avg. '1161 column Top 10% indicated by yellow cells and text

Does not include courses lists in the 'Sched. of Class data missing' tab

Does not include Facilities one off room bookings

Concurrent room bookings included (marginally inflates student count)

Campus Activity Charts  
Winter 2016 (1161) Week Two Snapshot

**All Campuses**

Student count

Time	Monday	Tuesday	Wednesday	Thursday	Friday	Avg '1161
8	1610	2488	2083	2127	2018	2065
9	2792	3047	2878	2828	2827	2874
10	2878	3324	3070	3139	2937	3070
11	2465	2799	2597	3075	2861	2759
12	2794	3247	3379	1952	2658	2806
13	2877	3102	3041	2829	2696	2909
14	2811	3448	2860	3025	2869	3003
15	1105	2985	2726	2833	2585	2447
16	1583	1805	2060	1543	929	1584
17	1479	1587	1440	1111	602	1244
18	675	637	475	621	124	506
19	416	558	438	356	102	374
20	92	88	171	102	0	113
21	23	42	91	88	0	61
22	0	0	0	0	0	0
Avg	1686	2083	1951	1831	1934	

**All Campuses**

# of classes

Time	Monday	Tuesday	Wednesday	Thursday	Friday	Avg '1161
8	52	86	79	82	77	75
9	107	124	125	123	122	120
10	117	131	124	134	132	128
11	103	115	110	134	133	119
12	103	122	118	93	104	108
13	115	126	108	128	111	118
14	110	132	113	136	119	122
15	51	113	99	118	107	98
16	55	65	60	70	43	59
17	48	67	42	64	26	49
18	31	42	18	43	6	28
19	19	38	14	27	5	21
20	6	6	7	5	0	6
21	2	2	4	4	0	3
22	0	0	0	0	0	0
Avg	66	84	73	83	82	

Notes: FC\_SPACE\_UTL\_VW - Space Utilization by Program View

Removed columns ACAD\_PROG, FC\_PRGM\_ENRL, SCHEDULED\_HRS, FC\_PRGM\_RM\_UTL

Removed activity that began after January 18, 2016

Removed activity that ended before January 18, 2016

Summation of all activity - Sutherland, Frost, Cobourg, Haliburton, Off campuses

Course start time that was not on the hour was rounded down (e.g. 8:20 to 8:00)

Course end time that was not on the hour was rounded up (e.g. 8:20 to 9:00)

Top 10% indicated by red cells and text

Avg. '1161 column Top 10% indicated by yellow cells and text

Does not include courses lists in the 'Sched. of Class data missing' tab

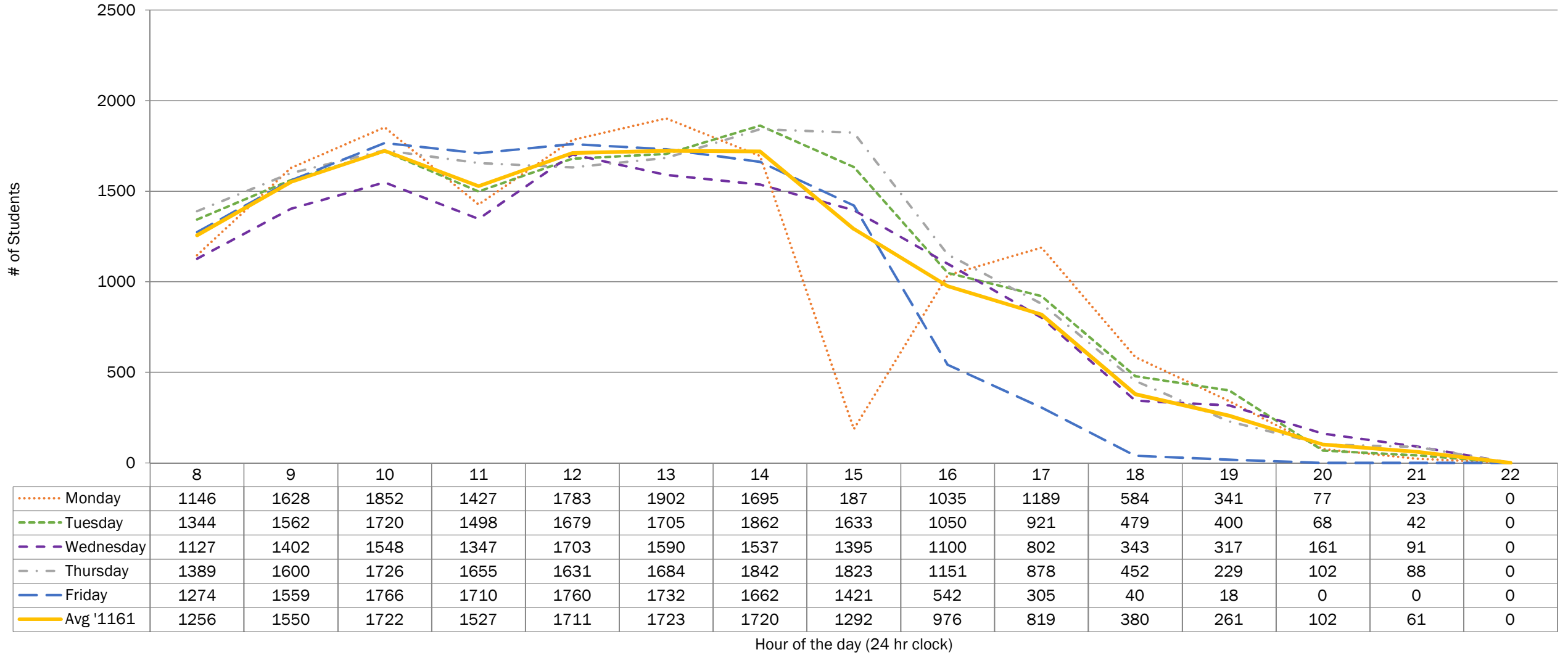
Does not include Facilities one off room bookings

Concurrent room bookings included (marginally inflates student count)

# Winter 2016 (1161) Student Activity - Sutherland Campus

## Week Two Snapshot

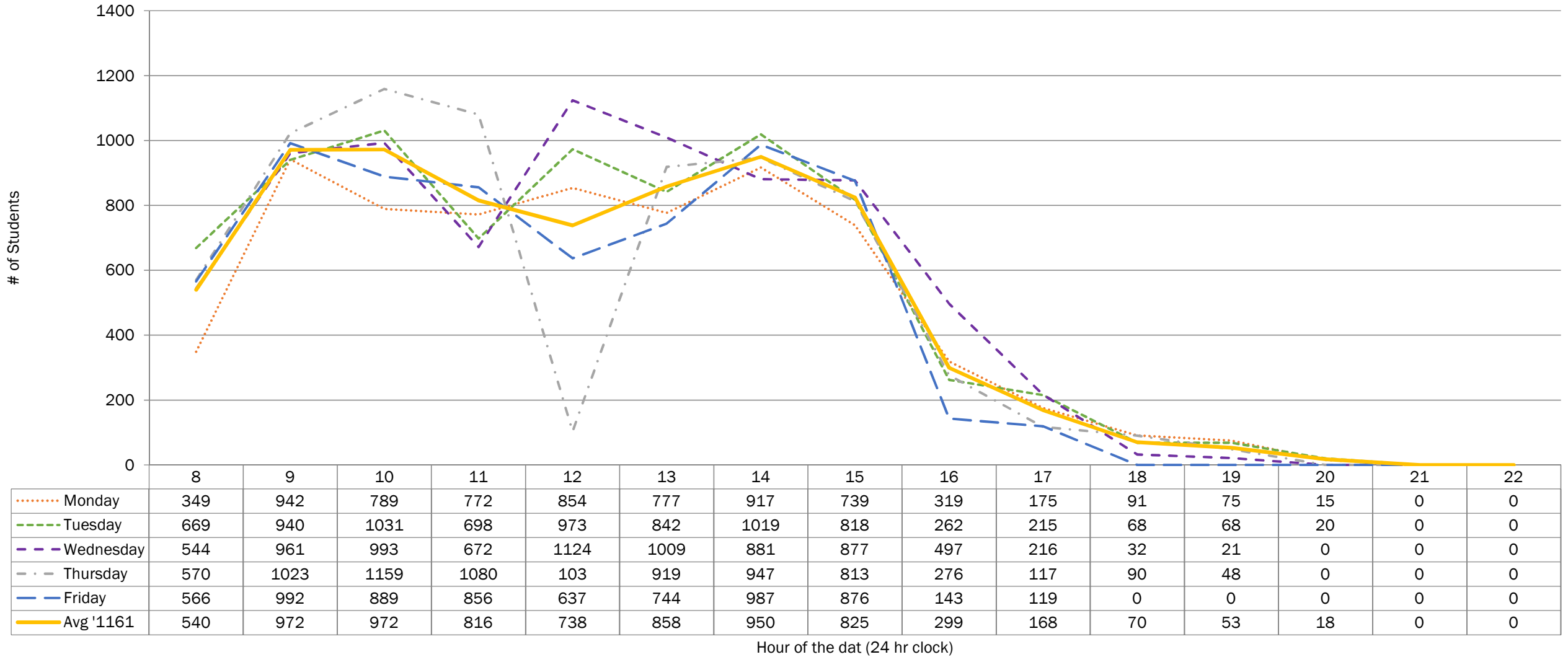
Includes Brealey, Wellness, & KTTC



..... Monday   
 - - - - Tuesday   
 - - - - Wednesday   
 - - - - Thursday   
 - - - - Friday   
 ——— Avg '1161

# Winter 2016 (1161) Student Activity - Frost Campus Week Two Snapshot

Includes Frost, Heavy Equipment, Law & Arbour, Fieldhouse, & Resource Drilling

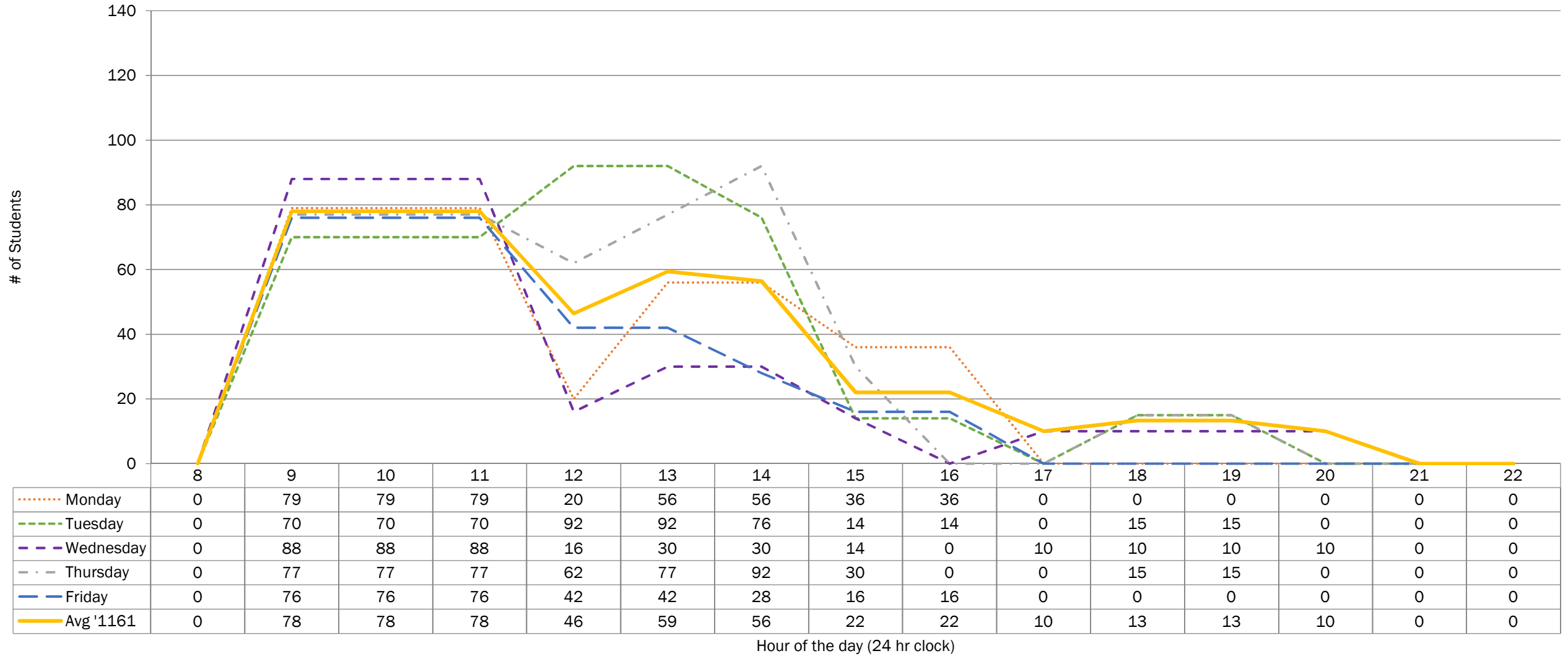


..... Monday   
 - - - - Tuesday   
 - - - - Wednesday   
 - . - . Thursday   
 - - - - Friday   
 ———— Avg '1161



## Winter 2016 (1161) Student Activity - Cobourg Campus Week Two Snapshot

Includes Cobourg

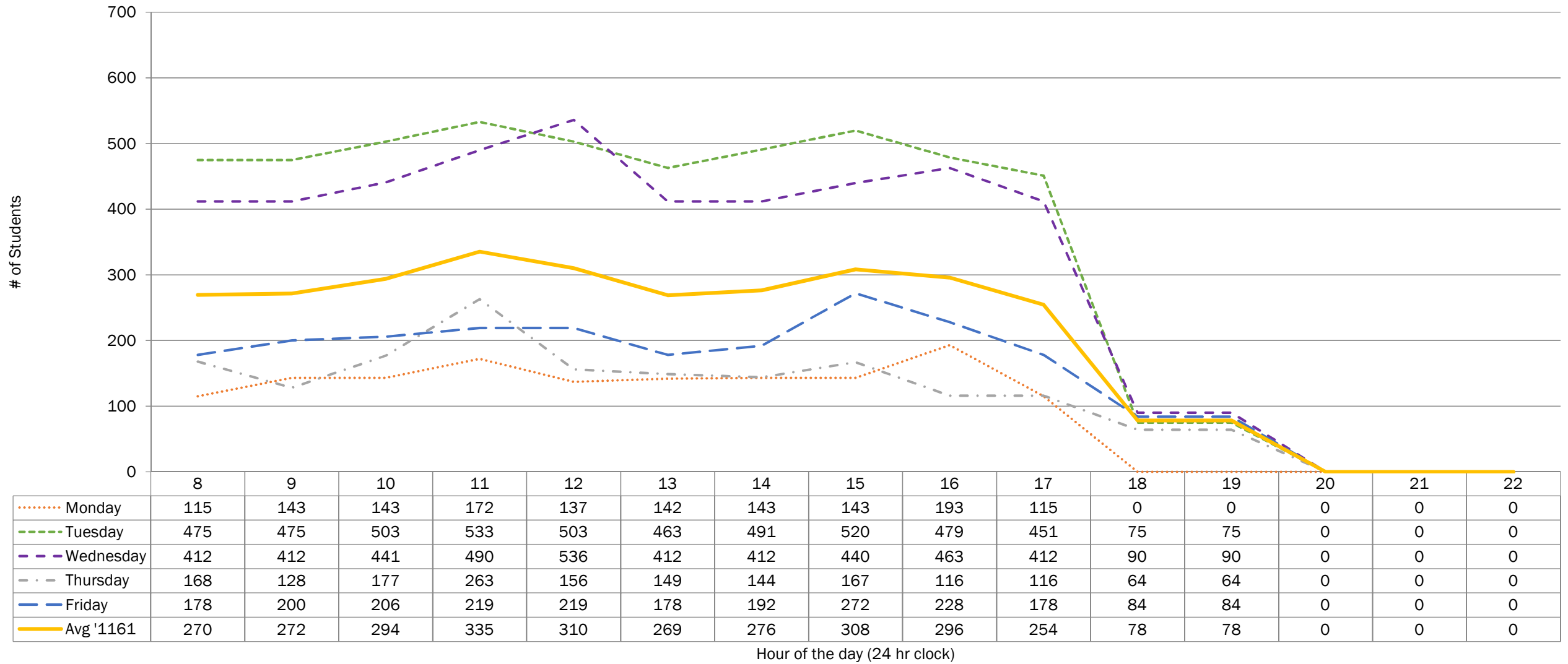


----- Monday   
 ----- Tuesday   
 ----- Wednesday   
 ----- Thursday   
 ----- Friday   
 ----- Avg '1161

## Winter 2016 (1161) Student Activity - Off Campus

### Week Two Snapshot

Includes Off & PRHC, PTBOMUSEUM

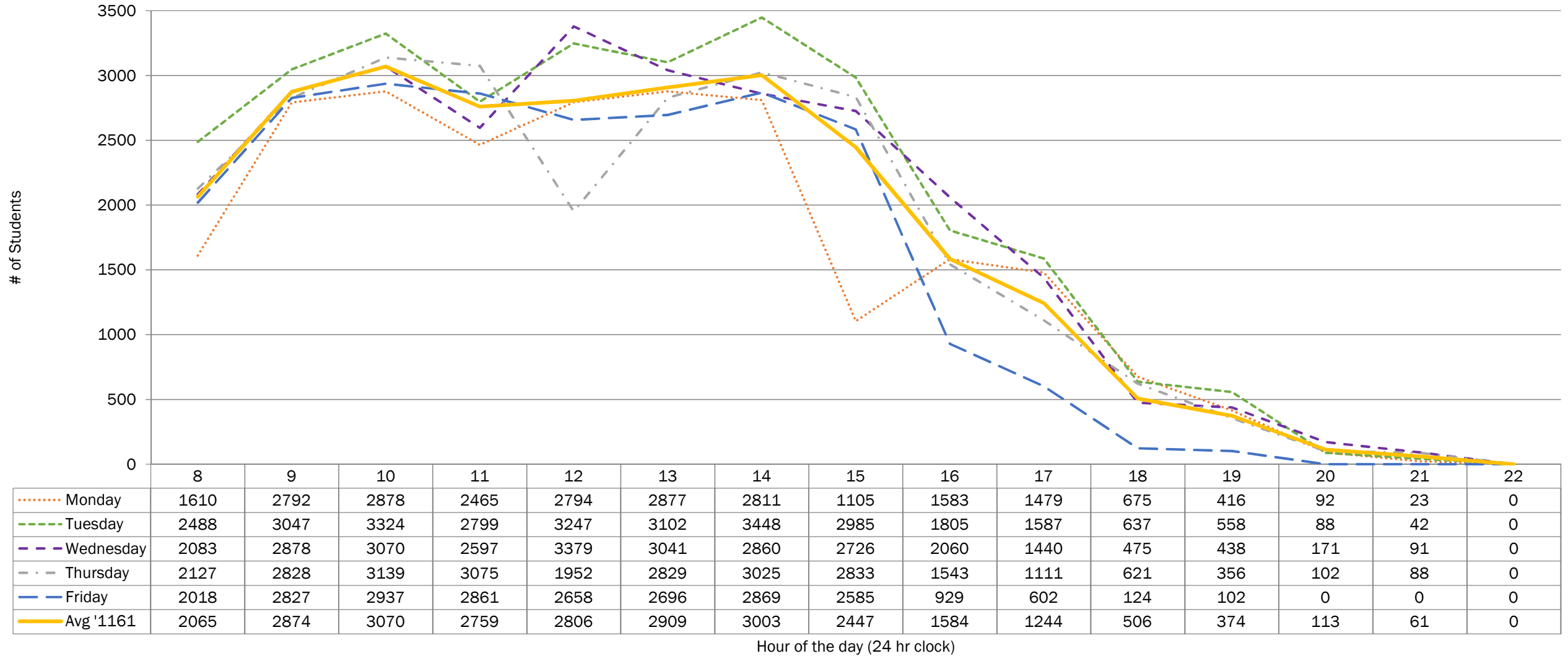


..... Monday   
 - - - - Tuesday   
 - - - - Wednesday   
 - . - . Thursday   
 - - - - Friday   
 ———— Avg '1161

# Winter 2016 (1161) Student Activity - All Campuses

## Week Two Snapshot

Sutherland, Frost, Cobourg, Haliburton, & Off



..... Monday   
 - - - - Tuesday   
 - - - - Wednesday   
 - · - · Thursday   
 - - - - Friday   
 ———— Avg '1161