

Campus Activity Charts
Fall 2016 (1169) Week Two Snapshot

Sutherland

Student count

Time	Monday	Tuesday	Wednesday	Thursday	Friday	Avg '1169
8	1299	1254	1361	1465	1577	1391
9	1572	1605	1613	1628	1639	1611
10	1687	1800	1918	1771	1806	1796
11	1743	1569	1850	1733	1727	1724
12	1742	1783	1779	1927	1671	1780
13	1740	1940	1528	1962	1734	1781
14	1526	1992	1845	1913	1709	1797
15	30	1965	1827	1815	1611	1450
16	1117	1363	1158	978	520	1027
17	969	1057	949	733	135	769
18	491	482	249	473	0	424
19	127	391	160	335	0	253
20	19	163	95	92	0	92
21	19	62	61	72	0	54
22	0	0	0	0	0	0
Avg	1006	1245	1171	1207	1413	

Sutherland

of classes

Time	Monday	Tuesday	Wednesday	Thursday	Friday	Avg '1169
8	45	44	47	50	56	48
9	53	53	59	57	60	56
10	53	60	60	61	63	59
11	53	48	60	59	59	56
12	53	58	57	61	56	57
13	56	65	51	63	61	59
14	45	65	63	66	61	60
15	1	65	58	63	57	49
16	37	48	42	35	17	36
17	33	39	35	28	8	29
18	17	21	13	18	0	17
19	8	18	8	14	0	12
20	1	7	5	4	0	4
21	1	3	3	3	0	3
22	0	0	0	0	0	0
Avg	33	42	40	42	50	

Notes: FC_SPACE_UTL_VW - Space Utilization by Program View

Removed columns ACAD_PROG, FC_PRGM_ENRL, SCHEDULED_HRS, FC_PRGM_RM_UTL

Removed activity that began after September 19, 2016

Removed activity that ended before September 19, 2016

Consolidated Sutherland campus buildings (BREALEY, WELLNESS & KTTC)

Course start time that was not on the hour was rounded down (e.g. 8:20 to 8:00)

Course end time that was not on the hour was rounded up (e.g. 8:20 to 9:00)

Top 10% indicated by red cells and text

Avg. '1169 column Top 10% indicated by yellow cells and text

Does not include courses lists in the 'Sched. of Class data missing' tab

Does not include Facilities one off room bookings

Concurrent room bookings included (marginally inflates student count)

Campus Activity Charts
Fall 2016 (1169) Week Two Snapshot

Frost

Student count

Time	Monday	Tuesday	Wednesday	Thursday	Friday	Avg '1169
8	636	820	401	593	823	655
9	903	1078	976	958	958	975
10	891	1200	1106	1237	952	1077
11	873	951	875	1306	738	949
12	655	855	923	21	831	657
13	798	1017	1224	1234	993	1053
14	911	953	1031	1140	755	958
15	713	850	991	797	563	783
16	339	350	445	525	107	353
17	94	152	154	338	21	152
18	52	92	120	82	0	87
19	26	0	168	0	0	97
20	26	0	138	0	0	82
21	0	0	0	0	0	0
22	0	0	0	0	0	0
Avg	532	756	658	748	674	

Frost

of classes

Time	Monday	Tuesday	Wednesday	Thursday	Friday	Avg '1169
8	20	23	13	17	28	20
9	28	38	28	30	35	32
10	32	42	33	39	34	36
11	31	33	30	40	27	32
12	21	27	28	1	23	20
13	26	32	35	39	28	32
14	34	34	35	35	27	33
15	27	27	33	27	20	27
16	12	10	12	16	4	11
17	4	4	6	11	1	5
18	2	2	4	3	0	3
19	1	0	4	0	0	3
20	1	0	3	0	0	2
21	0	0	0	0	0	0
22	0	0	0	0	0	0
Avg	18	25	20	23	23	

Notes: FC_SPACE_UTL_VW - Space Utilization by Program View

Removed columns ACAD_PROG, FC_PRGM_ENRL, SCHEDULED_HRS, FC_PRGM_RM_UTL

Removed activity that began after September 19, 2016

Removed activity that ended before September 19, 2016

Consolidated Lindsay campus buildings (Frost, Heavy Equipment, Law & Arbour, Fieldhouse & Resource Drilling)

Course start time that was not on the hour was rounded down (e.g. 8:20 to 8:00)

Course end time that was not on the hour was rounded up (e.g. 8:20 to 9:00)

Top 10% indicated by red cells and text

Avg. '1169 column Top 10% indicated by yellow cells and text

Does not include courses lists in the 'Sched. of Class data missing' tab

Does not include Facilities one off room bookings

Concurrent room bookings included (marginally inflates student count)

Campus Activity Charts
Fall 2016 (1169) Week Two Snapshot

Cobourg

Student count

Time	Monday	Tuesday	Wednesday	Thursday	Friday	Avg '1169
8	0	0	0	0	0	0
9	25	25	36	25	25	27
10	25	25	36	25	25	27
11	25	25	36	25	25	27
12	0	0	0	0	0	0
13	28	25	9	28	0	23
14	28	25	9	28	0	23
15	0	0	0	0	0	0
16	0	0	0	0	0	0
17	0	0	0	0	0	0
18	0	1	2	1	0	1
19	0	1	2	1	0	1
20	0	0	2	0	0	2
21	0	0	0	0	0	0
22	0	0	0	0	0	0
Avg	26	18	17	19	25	

Cobourg

of classes

Time	Monday	Tuesday	Wednesday	Thursday	Friday	Avg '1169
8	0	0	0	0	0	0
9	10	10	11	10	10	10
10	10	10	11	10	10	10
11	10	10	11	10	10	10
12	0	0	9	0	0	9
13	12	10	0	12	0	11
14	12	10	0	12	0	11
15	0	0	0	0	0	0
16	0	0	0	0	0	0
17	0	0	0	0	0	0
18	0	2	0	2	0	2
19	0	2	0	2	0	2
20	0	0	0	0	0	0
21	0	0	0	0	0	0
22	0	0	0	0	0	0
Avg	11	8	11	8	10	

Notes: FC_SPACE_UTL_VW - Space Utilization by Program View

Removed columns ACAD_PROG, FC_PRGM_ENRL, SCHEDULED_HRS, FC_PRGM_RM_UTL

Removed activity that began after September 19, 2016

Removed activity that ended before September 19, 2016

Course start time that was not on the hour was rounded down (e.g. 8:20 to 8:00)

Course end time that was not on the hour was rounded up (e.g. 8:20 to 9:00)

Top 10% indicated by red cells and text

Avg. '1169 column Top 10% indicated by yellow cells and text

Does not include courses lists in the 'Sched. of Class data missing' tab

Does not include Facilities one off room bookings

Concurrent room bookings included (marginally inflates student count)

Campus Activity Charts
Fall 2016 (1169) Week Two Snapshot

Haliburton

Student count

Time	Monday	Tuesday	Wednesday	Thursday	Friday	Avg '1169
8	12	0	0	0	0	12
9	12	0	0	0	0	12
10	0	0	0	12	0	12
11	0	0	0	0	0	0
12	0	0	0	0	0	0
13	0	0	0	0	0	0
14	0	0	0	0	0	0
15	0	0	0	0	0	0
16	0	0	0	0	0	0
17	0	0	0	0	0	0
18	0	0	0	0	0	0
19	0	0	0	0	0	0
20	0	0	0	0	0	0
21	0	0	0	0	0	0
22	0	0	0	0	0	0
Avg	12			12		

Haliburton

of classes

Time	Monday	Tuesday	Wednesday	Thursday	Friday	Avg '1169
8	1	0	0	0	0	1
9	1	0	0	0	0	1
10	0	0	0	1	0	1
11	0	0	0	0	0	0
12	0	0	0	0	0	0
13	0	0	0	0	0	0
14	0	0	0	0	0	0
15	0	0	0	0	0	0
16	0	0	0	0	0	0
17	0	0	0	0	0	0
18	0	0	0	0	0	0
19	0	0	0	0	0	0
20	0	0	0	0	0	0
21	0	0	0	0	0	0
22	0	0	0	0	0	0
Avg	1			1		

Notes: FC_SPACE_UTL_VW - Space Utilization by Program View

Removed columns ACAD_PROG, FC_PRGM_ENRL, SCHEDULED_HRS, FC_PRGM_RM_UTL

Removed activity that began after September 19, 2016

Removed activity that ended before September 19, 2016

Course start time that was not on the hour was rounded down (e.g. 8:20 to 8:00)

Course end time that was not on the hour was rounded up (e.g. 8:20 to 9:00)

Top 10% indicated by red cells and text

Avg. '1169 column Top 10% indicated by yellow cells and text

Does not include courses lists in the 'Sched. of Class data missing' tab

Does not include Facilities one off room bookings

Concurrent room bookings included (marginally inflates student count)

Campus Activity Charts
Fall 2016 (1169) Week Two Snapshot

Off

Student count

Time	Monday	Tuesday	Wednesday	Thursday	Friday	Avg '1169
8	154	295	275	212	116	210
9	154	295	302	212	116	216
10	169	364	282	246	182	249
11	152	322	280	212	155	224
12	173	259	253	186	155	205
13	111	225	240	140	141	171
14	138	310	240	176	148	202
15	153	228	204	98	129	162
16	99	215	231	84	141	154
17	99	242	204	84	116	149
18	99	28	0	44	0	57
19	81	28	0	44	0	51
20	0	0	0	0	0	0
21	0	0	0	0	0	0
22	0	0	0	0	0	0
Avg	132	234	251	145	140	

Off

of classes

Time	Monday	Tuesday	Wednesday	Thursday	Friday	Avg '1169
8	5	8	7	9	4	7
9	5	8	8	9	4	7
10	6	12	9	11	7	9
11	5	11	9	10	6	8
12	6	8	0	9	6	7
13	3	5	0	6	5	5
14	4	10	0	9	6	7
15	5	5	0	4	5	5
16	2	4	0	3	5	4
17	2	5	0	3	4	4
18	2	1	0	1	0	1
19	1	1	0	1	0	1
20	0	0	0	0	0	0
21	0	0	0	0	0	0
22	0	0	0	0	0	0
Avg	4	7	8	6	5	

Notes: FC_SPACE_UTL_VW - Space Utilization by Program View

Removed columns ACAD_PROG, FC_PRGM_ENRL, SCHEDULED_HRS, FC_PRGM_RM_UTL

Removed activity that began after September 19, 2016

Removed activity that ended before September 19, 2016

Consolidated Off campus buildings (OFF, PRHC, PTBOMUSEUM, & NORWOOD)

Course start time that was not on the hour was rounded down (e.g. 8:20 to 8:00)

Course end time that was not on the hour was rounded up (e.g. 8:20 to 9:00)

Top 10% indicated by red cells and text

Avg. '1169 column Top 10% indicated by yellow cells and text

Does not include courses lists in the 'Sched. of Class data missing' tab

Does not include Facilities one off room bookings

Concurrent room bookings included (marginally inflates student count)

Campus Activity Charts
Fall 2016 (1169) Week Two Snapshot

All Campuses

Student count

Time	Monday	Tuesday	Wednesday	Thursday	Friday	Avg '1165
8	2101	2369	2037	2270	2516	2259
9	2666	3003	2927	2823	2738	2831
10	2772	3389	3342	3291	2965	3152
11	2793	2867	3041	3276	2645	2924
12	2570	2897	2955	2134	2657	2643
13	2677	3207	3001	3364	2868	3023
14	2603	3280	3125	3257	2612	2975
15	896	3043	3022	2710	2303	2395
16	1555	1928	1834	1587	768	1534
17	1162	1451	1307	1155	272	1069
18	642	603	371	600	0	554
19	234	420	330	380	0	341
20	45	163	235	92	0	134
21	19	62	61	72	0	54
22	0	0	0	0	0	0
Avg	1624	2049	1971	1929	2234	

All Campuses

of classes

Time	Monday	Tuesday	Wednesday	Thursday	Friday	Avg '1165
8	71	75	67	76	88	75
9	97	109	106	106	109	105
10	101	124	113	122	114	115
11	99	102	110	119	102	106
12	80	93	94	71	85	85
13	97	112	86	120	94	102
14	95	119	98	122	94	106
15	33	97	91	94	82	79
16	51	62	54	54	26	49
17	39	48	41	42	13	37
18	21	26	17	24	0	22
19	10	21	12	17	0	15
20	2	7	8	4	0	5
21	1	3	3	3	0	3
22	0	0	0	0	0	0
Avg	57	71	64	70	81	

Notes: FC_SPACE_UTL_VW - Space Utilization by Program View

Removed columns ACAD_PROG, FC_PRGM_ENRL, SCHEDULED_HRS, FC_PRGM_RM_UTL

Removed activity that began after September 19, 2016

Removed activity that ended before September 19, 2016

Summation of all activity - Sutherland, Frost, Cobourg, Haliburton, Off campuses

Course start time that was not on the hour was rounded down (e.g. 8:20 to 8:00)

Course end time that was not on the hour was rounded up (e.g. 8:20 to 9:00)

Top 10% indicated by red cells and text

Avg. '1169 column Top 10% indicated by yellow cells and text

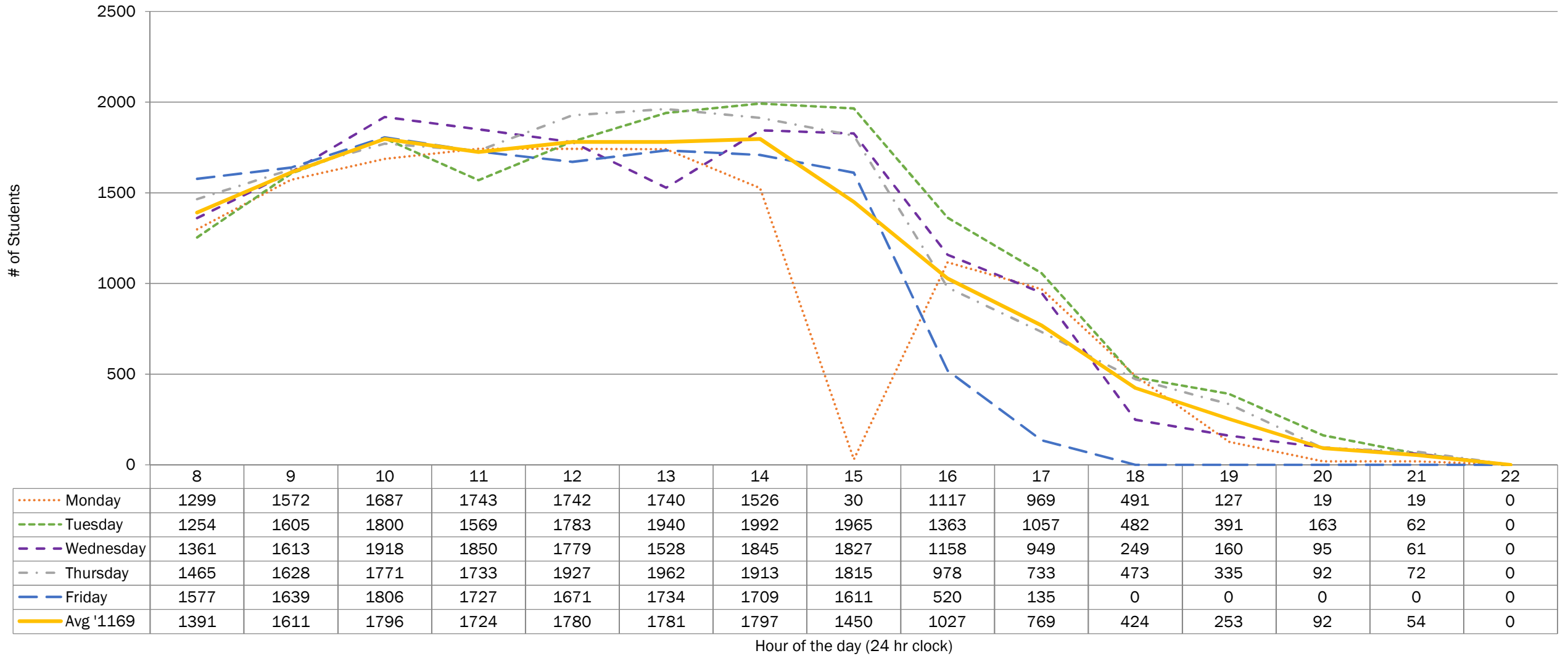
Does not include courses lists in the 'Sched. of Class data missing' tab

Does not include Facilities one off room bookings

Concurrent room bookings included (marginally inflates student count)

Fall 2016 (1169) Student Activity - Sutherland Campus Week Two Snapshot

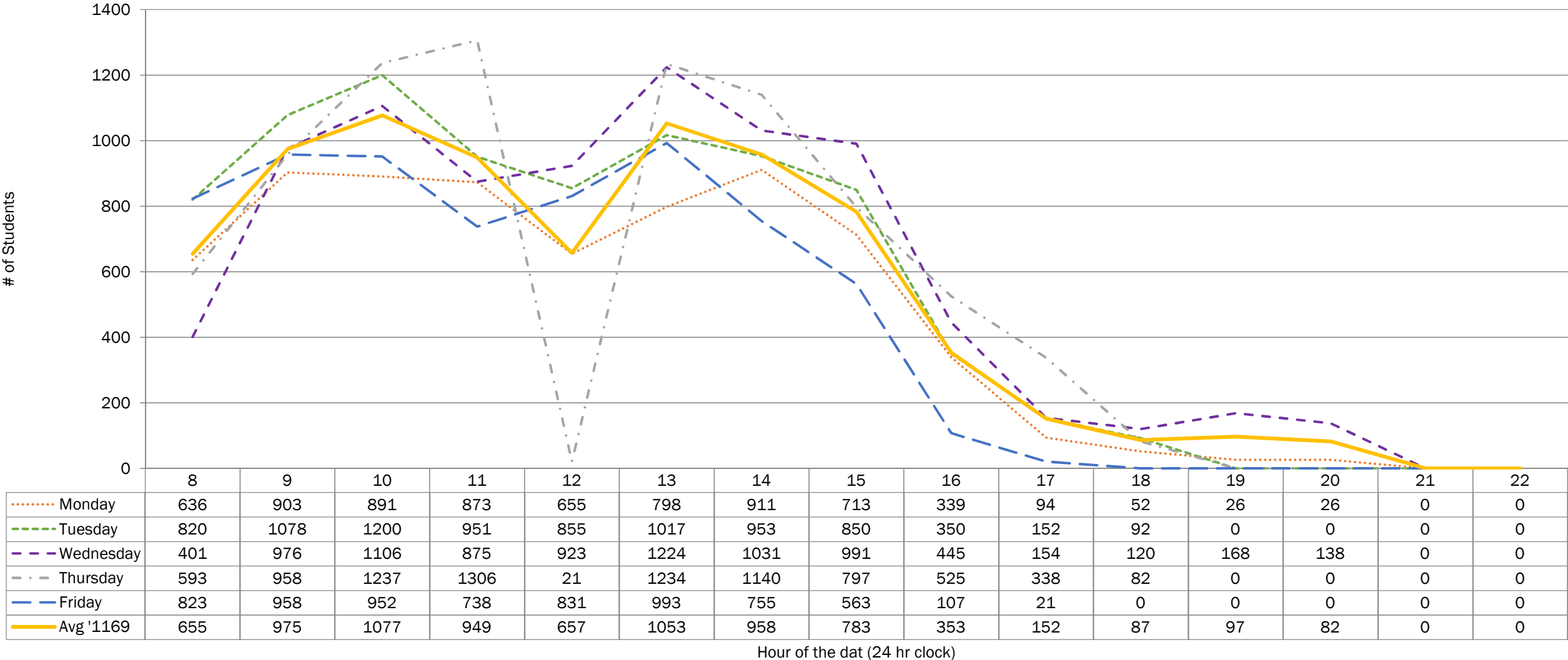
Includes building(s): BREALEY, WELLNESS, & KTTC



..... Monday
 - - - - Tuesday
 - - - - Wednesday
 - - - - Thursday
 - - - - Friday
 ———— Avg '1169

Fall 2016 (1169) Student Activity - Frost Campus Week Two Snapshot

Includes building(s): FROST, HEAVY EQUIPMENT, LAW & ARBOUR, FIELDHOUSE, & RESOURCE DRILLING

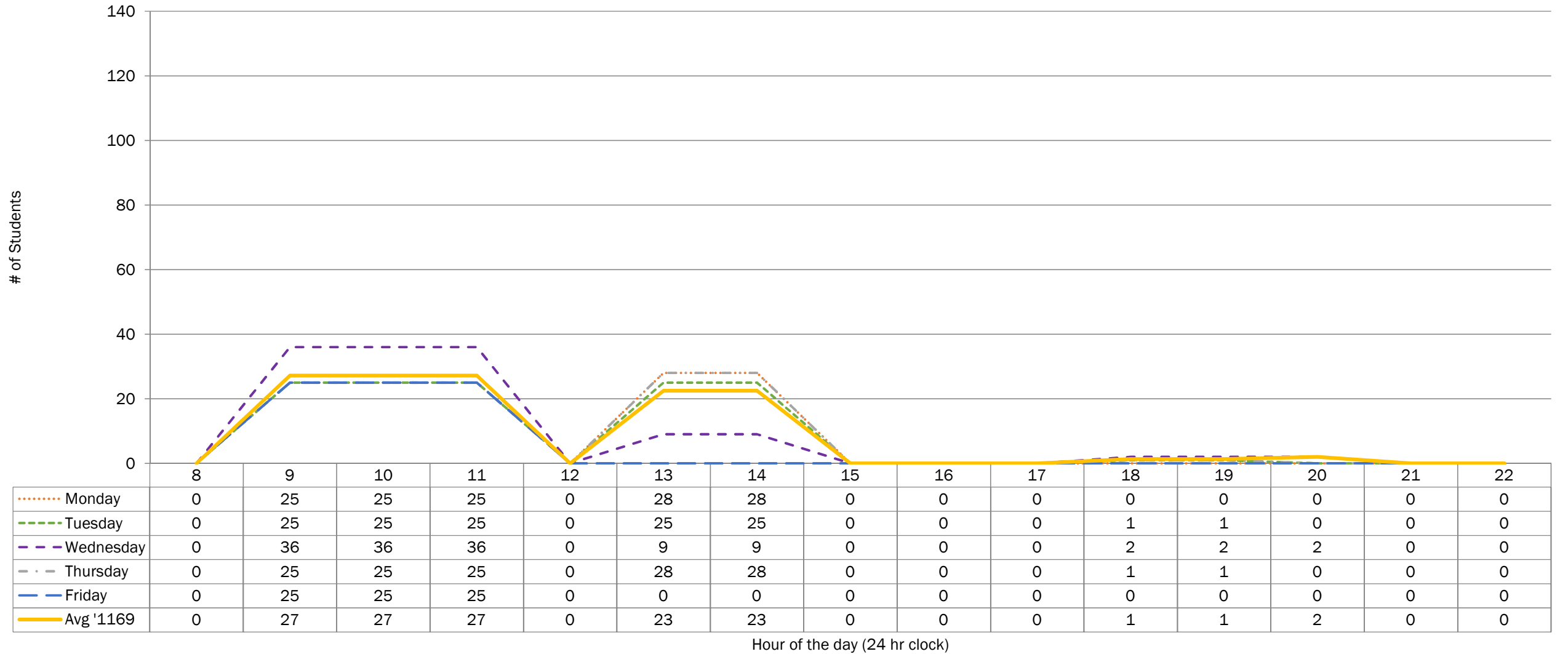


..... Monday
 - - - - Tuesday
 - - - - Wednesday
 - - - - Thursday
 - - - - Friday
 ———— Avg '1169

Fall 2016 (1169) Student Activity - Cobourg Campus

Week Two Snapshot

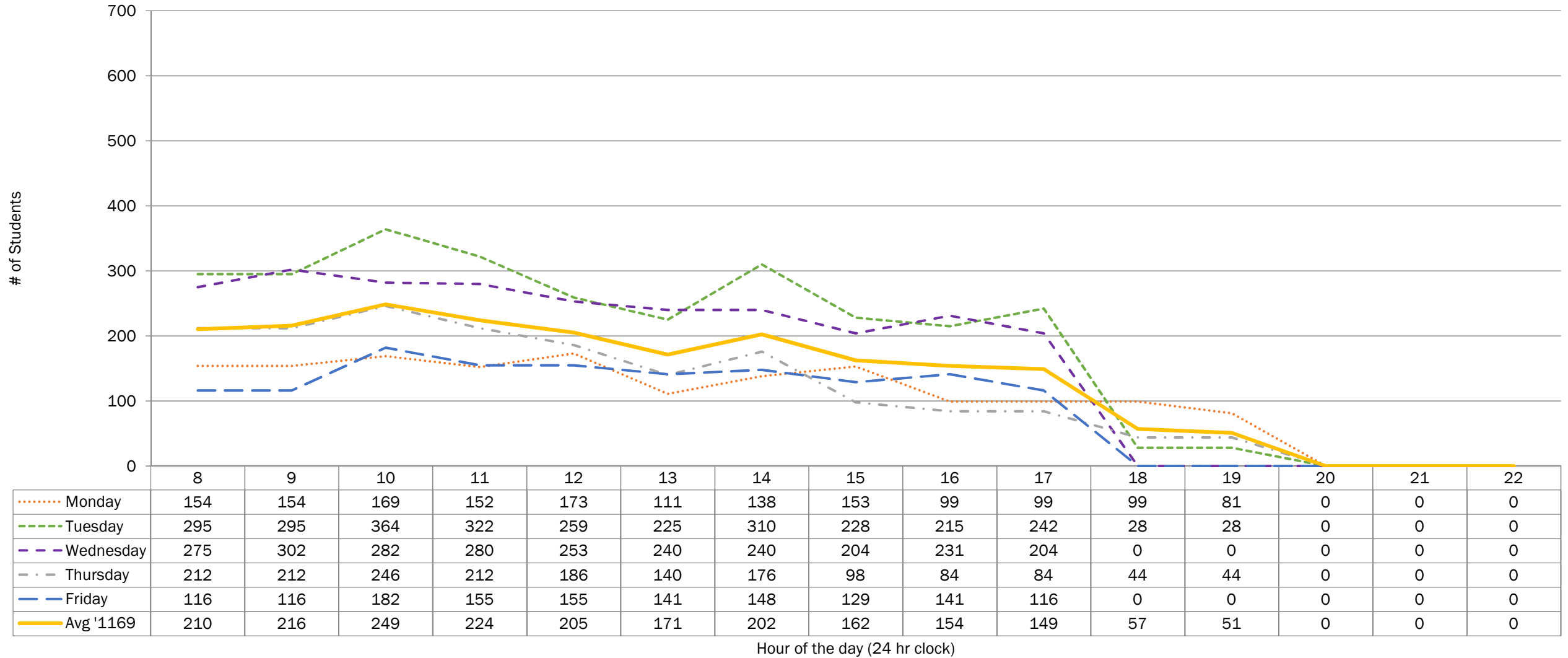
Includes building(s): COBOURG



..... Monday
 - - - - Tuesday
 - - - - Wednesday
 - - - - Thursday
 - - - - Friday
 ———— Avg '1169

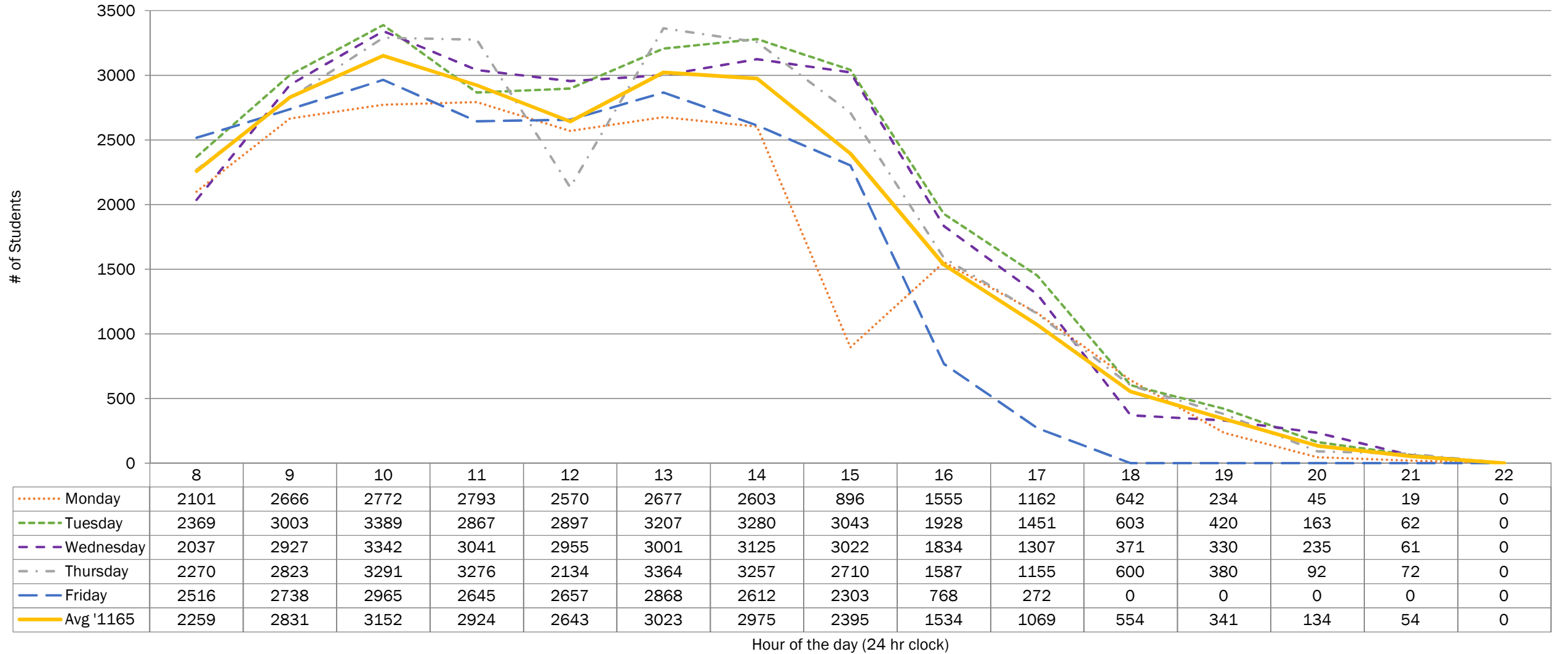
Fall 2016 (1169) Student Activity - Off Campus Week Two Snapshot

Includes building(s): OFF & PRHC, PTBOMUSEUM, NORWOOD



..... Monday
 - - - - Tuesday
 - - - - Wednesday
 - - - - Thursday
 - - - - Friday
 ———— Avg '1169

Fall 2016 (1169) Student Activity - All Campuses Week Two Snapshot SUTHERLAND, FROST, COBOURG, HALIBURTON, & OFF



..... Monday
 - - - - Tuesday
 - - - - Wednesday
 - . - . Thursday
 - - - - Friday
 ———— Avg '1165