

Campus Activity Charts  
Fall 2017 (1179) Week Two Snapshot

**Sutherland**

Student count

Time	Monday	Tuesday	Wednesday	Thursday	Friday	Avg '1179
8	1321	1623	1199	1194	1436	1355
9	1649	1871	1829	1753	1811	1783
10	1855	2003	1955	1942	2151	1981
11	1960	1949	1910	1714	1956	1898
12	1874	2097	1987	1980	1807	1949
13	2009	2143	1995	2089	1940	2035
14	1671	2050	1999	2015	1907	1928
15	147	2066	2027	2107	1623	1594
16	1405	1435	1340	1331	689	1240
17	1103	981	837	926	337	837
18	497	578	448	447	24	399
19	187	433	253	267	0	285
20	48	52	72	81	0	63
21	30	29	48	81	0	47
22	0	0	0	0	0	0
Avg	1125	1379	1279	1281	1426	

**Sutherland**

# of classes

Time	Monday	Tuesday	Wednesday	Thursday	Friday	Avg '1179
8	46	51	44	49	46	47
9	56	66	63	68	61	63
10	60	73	64	69	72	68
11	59	68	66	60	70	65
12	57	67	67	70	57	64
13	63	70	64	76	67	68
14	54	70	69	71	67	66
15	7	72	68	70	60	55
16	39	51	45	45	26	41
17	38	37	32	34	12	31
18	21	25	18	18	1	17
19	10	18	11	12	0	13
20	3	2	3	4	0	3
21	2	1	2	4	0	2
22	0	0	0	0	0	0
Avg	37	48	44	46	49	

Notes: FC\_SPACE\_UTL\_VW - Space Utilization by Program View

Removed columns ACAD\_PROG, FC\_PRGM\_ENRL, SCHEDULED\_HRS, FC\_PRGM\_RM\_UTL

Removed activity that began after September 18, 2017

Removed activity that ended before September 18, 2017

Consolidated Sutherland campus buildings (BREALEY, WELLNESS & KTTC)

Course start time that was not on the hour was rounded down (e.g. 8:20 to 8:00)

Course end time that was not on the hour was rounded up (e.g. 8:20 to 9:00)

Top 10% indicated by red cells and text

Avg. '1179 column Top 10% indicated by yellow cells and text

Does not include courses lists in the 'Sched. of Class data missing' tab

Does not include Facilities one off room bookings

Concurrent room bookings included (marginally inflates student count)

Campus Activity Charts  
Fall 2017 (1179) Week Two Snapshot

**Frost**

Student count

Time	Monday	Tuesday	Wednesday	Thursday	Friday	Avg '1179
8	531	1030	706	688	871	765
9	832	1309	972	998	1161	1054
10	1044	1175	1038	1107	1037	1080
11	1017	751	913	1112	936	946
12	873	955	1123	59	838	770
13	867	1106	1019	1109	1137	1048
14	1116	886	952	1191	1063	1042
15	802	771	621	952	522	734
16	478	114	160	534	98	277
17	364	15	223	184	5	158
18	48	15	189	47	5	61
19	48	15	163	15	5	49
20	0	0	0	0	0	0
21	0	0	0	0	0	0
22	0	0	0	0	0	0
Avg	668	679	673	666	640	

**Frost**

# of classes

Time	Monday	Tuesday	Wednesday	Thursday	Friday	Avg '1179
8	9	29	24	19	23	21
9	41	49	50	47	36	45
10	49	53	57	48	34	48
11	44	42	44	47	32	42
12	39	42	47	14	26	34
13	39	47	52	49	32	44
14	38	46	52	54	33	45
15	35	41	37	46	19	36
16	24	15	18	27	6	18
17	20	11	19	17	3	14
18	12	11	17	12	3	11
19	12	11	16	11	3	11
20	0	0	0	0	0	0
21	0	0	0	0	0	0
22	0	0	0	0	0	0
Avg	30	33	36	33	21	

Notes: FC\_SPACE\_UTL\_VW - Space Utilization by Program View

Removed columns ACAD\_PROG, FC\_PRGM\_ENRL, SCHEDULED\_HRS, FC\_PRGM\_RM\_UTL

Removed activity that began after September 18, 2017

Removed activity that ended before September 18, 2017

Consolidated Lindsay campus buildings (Frost, Heavy Equipment, Law & Arbour, Fieldhouse & Resource Drilling)

Course start time that was not on the hour was rounded down (e.g. 8:20 to 8:00)

Course end time that was not on the hour was rounded up (e.g. 8:20 to 9:00)

Top 10% indicated by red cells and text

Avg. '1179 column Top 10% indicated by yellow cells and text

Does not include courses lists in the 'Sched. of Class data missing' tab

Does not include Facilities one off room bookings

Concurrent room bookings included (marginally inflates student count)

Campus Activity Charts  
Fall 2017 (1179) Week Two Snapshot

**Cobourg**

Student count

Time	Monday	Tuesday	Wednesday	Thursday	Friday	Avg '1179
8	8	0	8	8	0	8
9	36	52	16	36	28	34
10	36	52	16	36	28	34
11	36	52	16	36	28	34
12	12	28	4	28	28	20
13	4	28	4	28	28	18
14	4	36	4	28	28	20
15	0	0	0	0	0	0
16	0	0	0	0	0	0
17	0	0	7	0	0	7
18	0	6	7	6	0	6
19	0	6	7	6	0	6
20	0	0	7	0	0	7
21	0	0	0	0	0	0
22	0	0	0	0	0	0
Avg	19	33	9	24	28	

**Cobourg**

# of classes

Time	Monday	Tuesday	Wednesday	Thursday	Friday	Avg '1179
8	1	0	1	1	0	1
9	11	12	2	11	10	9
10	11	12	2	11	10	9
11	11	12	2	11	10	9
12	3	10	9	10	10	8
13	2	10	0	10	10	8
14	2	11	0	10	10	8
15	0	0	0	0	0	0
16	0	0	0	0	0	0
17	0	0	0	1	0	1
18	0	2	0	3	0	3
19	0	2	0	3	0	3
20	0	0	0	1	0	1
21	0	0	0	0	0	0
22	0	0	0	0	0	0
Avg	6	9	3	7	10	

Notes: FC\_SPACE\_UTL\_VW - Space Utilization by Program View

Removed columns ACAD\_PROG, FC\_PRGM\_ENRL, SCHEDULED\_HRS, FC\_PRGM\_RM\_UTL

Removed activity that began after September 18, 2017

Removed activity that ended before September 18, 2017

Course start time that was not on the hour was rounded down (e.g. 8:20 to 8:00)

Course end time that was not on the hour was rounded up (e.g. 8:20 to 9:00)

Top 10% indicated by red cells and text

Avg. '1179 column Top 10% indicated by yellow cells and text

Does not include courses lists in the 'Sched. of Class data missing' tab

Does not include Facilities one off room bookings

Concurrent room bookings included (marginally inflates student count)

Campus Activity Charts  
Fall 2017 (1179) Week Two Snapshot

**Haliburton**

Student count

Time	Monday	Tuesday	Wednesday	Thursday	Friday	Avg '1179
8	0	0	0	0	0	0
9	0	0	0	0	0	0
10	0	0	0	0	0	0
11	0	0	0	0	0	0
12	0	20	0	0	0	20
13	0	20	0	0	0	20
14	0	20	0	0	0	20
15	0	20	0	0	0	20
16	0	0	0	0	0	0
17	0	0	0	0	0	0
18	0	0	0	0	0	0
19	0	0	0	0	0	0
20	0	0	0	0	0	0
21	0	0	0	0	0	0
22	0	0	0	0	0	0
Avg		20				

**Haliburton**

# of classes

Time	Monday	Tuesday	Wednesday	Thursday	Friday	Avg '1179
8	0	0	0	0	0	0
9	0	0	0	0	0	0
10	0	0	0	0	0	0
11	0	0	0	0	0	0
12	0	1	0	0	0	1
13	0	1	0	0	0	1
14	0	1	0	0	0	1
15	0	1	0	0	0	1
16	0	0	0	0	0	0
17	0	0	0	0	0	0
18	0	0	0	0	0	0
19	0	0	0	0	0	0
20	0	0	0	0	0	0
21	0	0	0	0	0	0
22	0	0	0	0	0	0
Avg		1				

Notes: FC\_SPACE\_UTL\_VW - Space Utilization by Program View

Removed columns ACAD\_PROG, FC\_PRGM\_ENRL, SCHEDULED\_HRS, FC\_PRGM\_RM\_UTL

Removed activity that began after September 18, 2017

Removed activity that ended before September 18, 2017

Course start time that was not on the hour was rounded down (e.g. 8:20 to 8:00)

Course end time that was not on the hour was rounded up (e.g. 8:20 to 9:00)

Top 10% indicated by red cells and text

Avg. '1179 column Top 10% indicated by yellow cells and text

Does not include courses lists in the 'Sched. of Class data missing' tab

Does not include Facilities one off room bookings

Concurrent room bookings included (marginally inflates student count)

Campus Activity Charts  
Fall 2017 (1179) Week Two Snapshot

**Off**

Student count

Time	Monday	Tuesday	Wednesday	Thursday	Friday	Avg '1179
8	148	212	221	146	189	183
9	146	273	251	197	189	211
10	158	317	234	241	201	230
11	134	248	210	172	163	185
12	121	218	192	158	178	173
13	145	175	197	113	199	166
14	142	209	197	128	213	178
15	121	189	164	107	162	149
16	122	175	189	92	148	145
17	92	200	164	92	148	139
18	74	0	0	62	0	68
19	74	0	0	62	0	68
20	0	0	0	0	0	0
21	0	0	0	0	0	0
22	0	0	0	0	0	0
Avg	123	222	202	131	179	

**Off**

# of classes

Time	Monday	Tuesday	Wednesday	Thursday	Friday	Avg '1179
8	8	7	8	8	9	8
9	8	10	10	10	9	9
10	8	12	9	12	9	10
11	4	8	6	8	6	6
12	3	6	0	7	7	6
13	4	3	0	4	7	5
14	4	5	0	5	8	6
15	3	4	0	4	6	4
16	3	3	0	3	5	4
17	2	4	0	3	5	4
18	1	0	0	1	0	1
19	1	0	0	1	0	1
20	0	0	0	0	0	0
21	0	0	0	0	0	0
22	0	0	0	0	0	0
Avg	4	6	8	6	7	

Notes: FC\_SPACE\_UTL\_VW - Space Utilization by Program View

Removed columns ACAD\_PROG, FC\_PRGM\_ENRL, SCHEDULED\_HRS, FC\_PRGM\_RM\_UTL

Removed activity that began after September 18, 2017

Removed activity that ended before September 18, 2017

Consolidated Off campus buildings (OFF, OCAD-T PRHC, PTBOMUSEUM, & NORWOOD)

Course start time that was not on the hour was rounded down (e.g. 8:20 to 8:00)

Course end time that was not on the hour was rounded up (e.g. 8:20 to 9:00)

Top 10% indicated by red cells and text

Avg. '1179 column Top 10% indicated by yellow cells and text

Does not include courses lists in the 'Sched. of Class data missing' tab

Does not include Facilities one off room bookings

Concurrent room bookings included (marginally inflates student count)

Campus Activity Charts  
Fall 2017 (1179) Week Two Snapshot

**All Campuses**

Student count

Time	Monday	Tuesday	Wednesday	Thursday	Friday	Avg '1179
8	2008	2865	2134	2036	2496	2308
9	2663	3505	3068	2984	3189	3082
10	3093	3547	3243	3326	3417	3325
11	3147	3000	3049	3034	3083	3063
12	2880	3318	3306	2225	2851	2916
13	3025	3472	3215	3339	3304	3271
14	2933	3201	3152	3362	3211	3172
15	1070	3046	2812	3166	2307	2480
16	2005	1724	1689	1957	935	1662
17	1559	1196	1231	1202	490	1136
18	619	599	644	562	29	491
19	309	454	423	350	5	308
20	48	52	79	81	0	65
21	30	29	48	81	0	47
22	0	0	0	0	0	0
Avg	1814	2143	2007	1979	2110	

**All Campuses**

# of classes

Time	Monday	Tuesday	Wednesday	Thursday	Friday	Avg '1179
8	64	87	77	77	78	77
9	116	137	125	136	116	126
10	128	150	132	140	125	135
11	118	130	118	126	118	122
12	102	126	123	101	100	110
13	108	131	116	139	116	122
14	98	133	121	140	118	122
15	45	118	105	120	85	95
16	66	69	63	75	37	62
17	60	52	51	55	20	48
18	34	38	35	34	4	29
19	23	31	27	27	3	22
20	3	2	3	5	0	3
21	2	1	2	4	0	2
22	0	0	0	0	0	0
Avg	69	86	78	84	77	

Notes: FC\_SPACE\_UTL\_VW - Space Utilization by Program View

Removed columns ACAD\_PROG, FC\_PRGM\_ENRL, SCHEDULED\_HRS, FC\_PRGM\_RM\_UTL

Removed activity that began after September 18, 2017

Removed activity that ended before September 18, 2017

Summation of all activity - Sutherland, Frost, Cobourg, Haliburton, Off campuses

Course start time that was not on the hour was rounded down (e.g. 8:20 to 8:00)

Course end time that was not on the hour was rounded up (e.g. 8:20 to 9:00)

Top 10% indicated by red cells and text

Avg. '1179 column Top 10% indicated by yellow cells and text

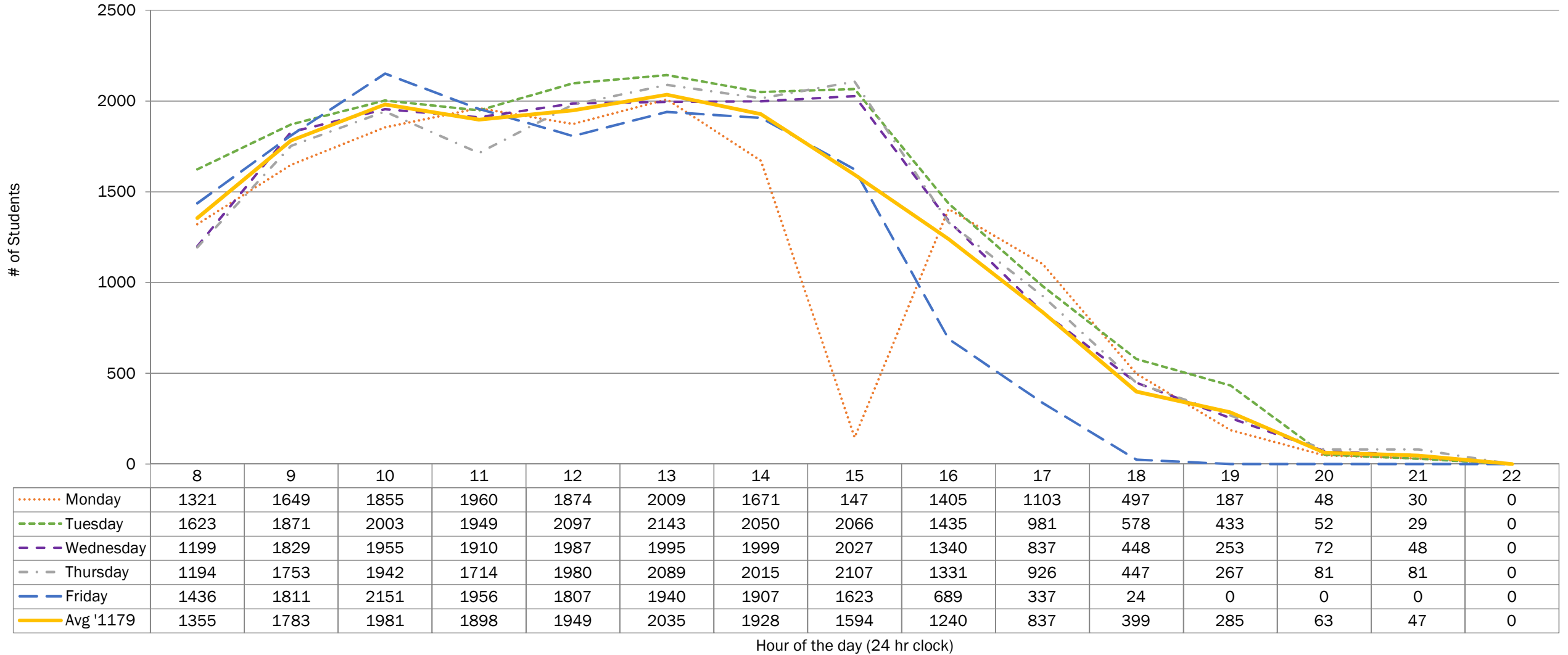
Does not include courses lists in the 'Sched. of Class data missing' tab

Does not include Facilities one off room bookings

Concurrent room bookings included (marginally inflates student count)

## Fall 2017 (1179) Student Activity - Sutherland Campus Week Two Snapshot

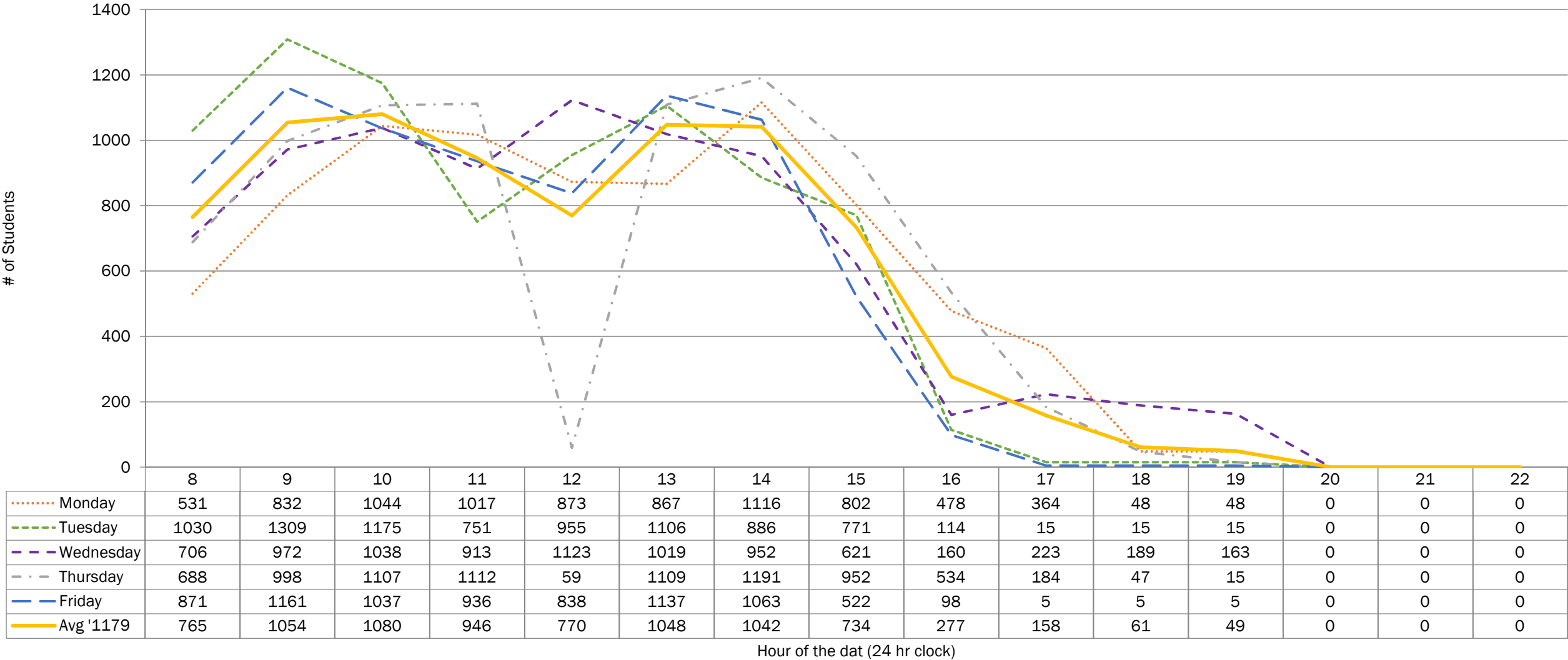
Includes building(s): BREALEY, WELLNESS, ST. JOSEPHS, & KTTC



..... Monday   
 - - - - Tuesday   
 - - - - Wednesday   
 - - - - Thursday   
 - - - - Friday   
 ———— Avg '1179

# Fall 2017 (1179) Student Activity - Frost Campus Week Two Snapshot

Includes building(s): FROST, HEAVY EQUIPMENT, LAW & ARBOUR, FIELDHOUSE, & RESOURCE DRILLING



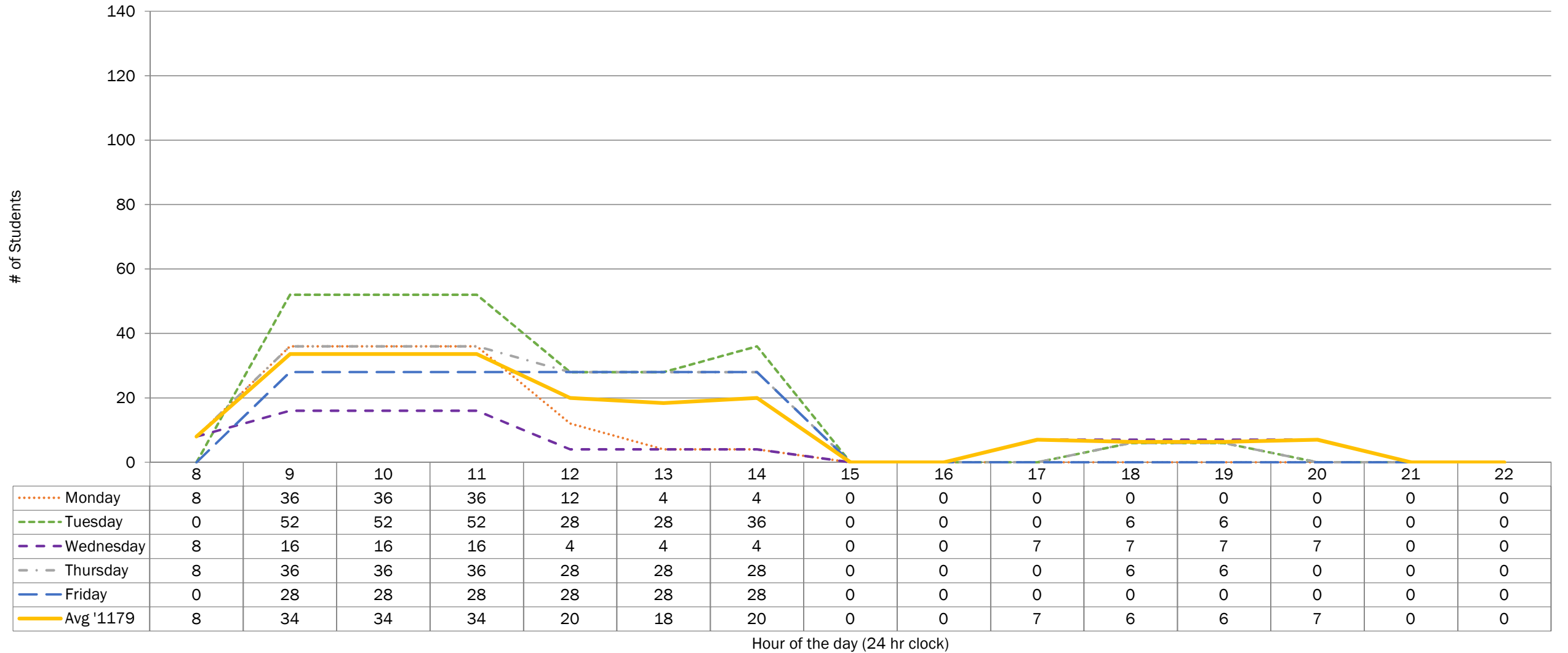
..... Monday   
 - - - - Tuesday   
 - - - - Wednesday   
 - . - . Thursday   
 - - - - Friday   
 ———— Avg '1179



## Fall 2017 (1179) Student Activity - Cobourg Campus

### Week Two Snapshot

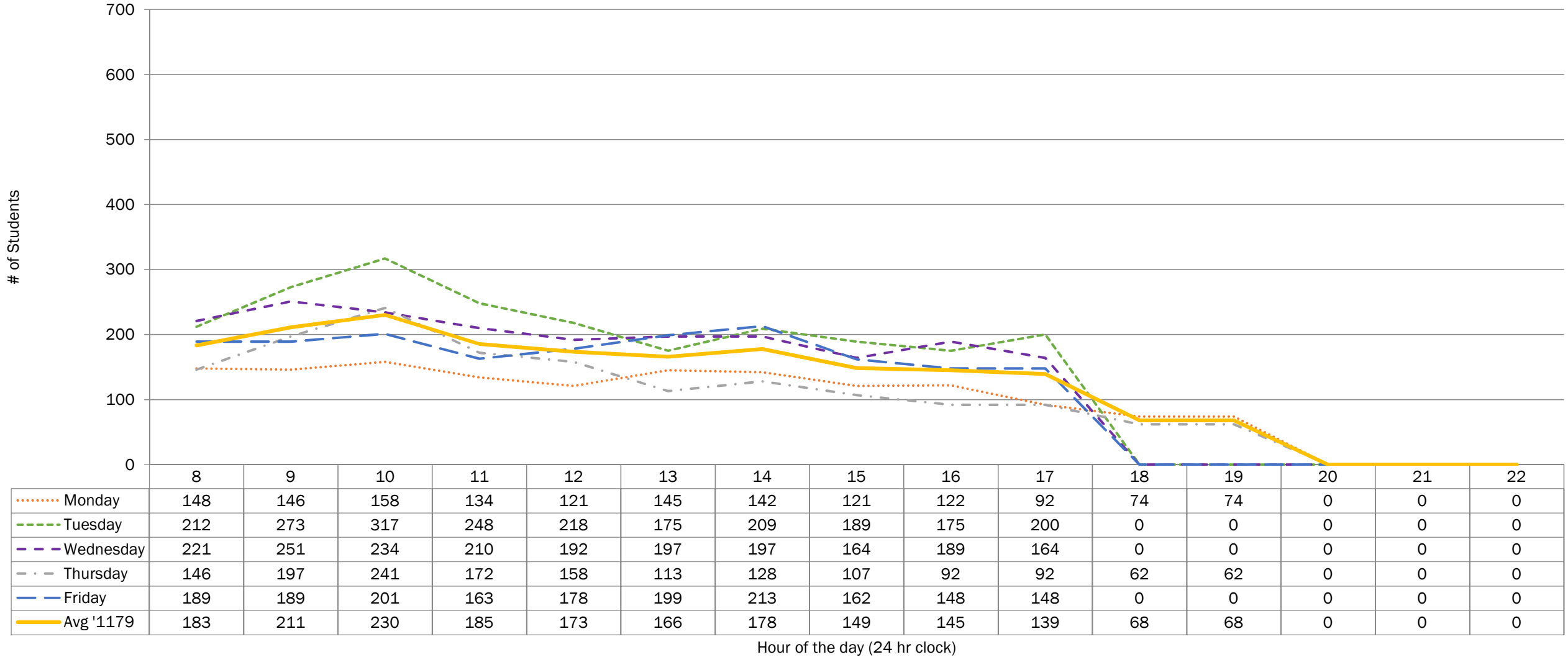
Includes building(s): COBOURG



..... Monday   
 - - - - Tuesday   
 - - - - Wednesday   
 - . - . Thursday   
 \_ \_ \_ \_ Friday   
 \_ \_ \_ \_ Avg '1179

# Fall 2017 (1179) Student Activity - Off Campus Week Two Snapshot

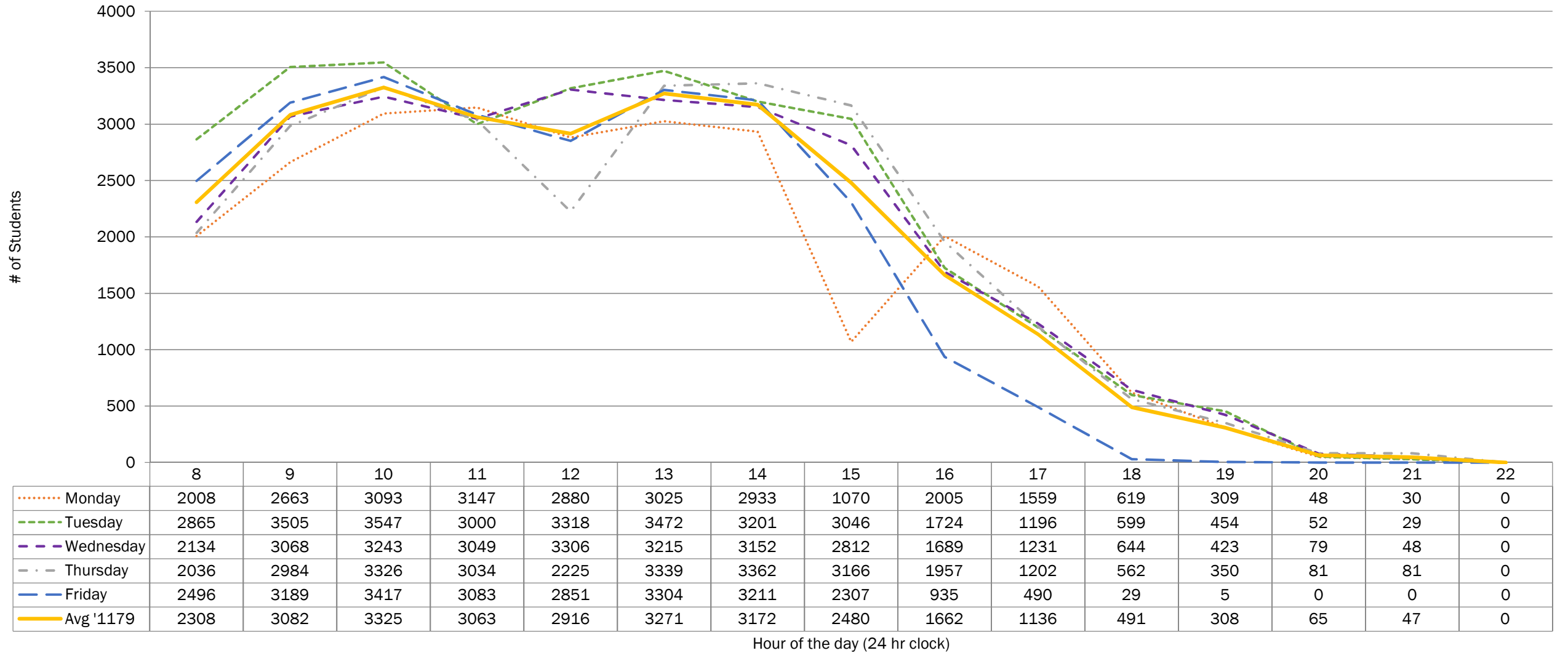
Includes building(s): OFF, OCAD-T, PRHC, PTBOMUSEUM, & NORWOOD



..... Monday   
 - - - - Tuesday   
 - - - - Wednesday   
 - . - . Thursday   
 - - - - Friday   
 ———— Avg '1179

## Fall 2017 (1179) Student Activity - All Campuses Week Two Snapshot

SUTHERLAND, FROST, COBOURG, HALIBURTON, & OFF



..... Monday   
 - - - - Tuesday   
 - - - - Wednesday   
 - . - . Thursday   
 - - - - Friday   
 ———— Avg '1179