

Campus Activity Charts
Week Two Snapshot

SUTHERLAND

Student count

Time	Monday	Tuesday	Wednesday	Thursday	Friday	Avg '1199
8	1580	1551	1620	1605	1470	1565
9	1594	1440	1692	1743	1761	1646
10	1864	1886	1783	1849	1980	1872
11	1720	1791	1918	1931	1969	1866
12	1838	2109	1832	2139	1867	1957
13	1901	2058	1927	2071	1714	1934
14	1687	2119	1979	2093	1924	1960
15	143	1925	1914	1937	2035	1591
16	1765	1800	1856	1469	1597	1697
17	1733	1456	1459	1711	1223	1516
18	1414	1235	1087	1392	70	1040
19	889	814	644	817	0	791
20	61	178	123	93	0	114
21	19	0	123	72	0	71
22	0	0	0	0	0	0
Avg	1301	1566	1426	1494	1601	

SUTHERLAND

of classes

Time	Monday	Tuesday	Wednesday	Thursday	Friday	Avg '1199
8	59	55	58	57	56	57
9	64	63	67	68	70	66
10	67	76	68	74	76	72
11	66	70	69	72	74	70
12	69	76	70	82	69	73
13	71	71	69	83	64	72
14	60	75	66	84	71	71
15	12	72	66	80	74	61
16	67	71	60	65	63	65
17	65	59	52	67	45	58
18	49	50	41	56	2	40
19	29	39	26	37	0	33
20	4	9	6	4	0	6
21	1	1	6	3	0	3
22	0	0	0	0	0	0
Avg	49	56	52	59	60	

Notes: FC_SPACE_UTL_VW - Space Utilization by Program View

Removed columns ACAD_PROG, FC_PRGM_ENRL, SCHEDULED_HRS, FC_PRGM_RM_UTL

Removed activity that began after September 16, 2019

Removed activity that ended before September 16, 2019

Consolidated Sutherland campus buildings (BREALEY, WELLNESS & KTTC)

Course start time that was not on the hour was rounded down (e.g. 8:20 to 8:00)

Course end time that was not on the hour was rounded up (e.g. 8:20 to 9:00)

Top 10% indicated by red cells and text

Avg '1199 column Top 10% indicated by yellow cells and text

Does not include courses lists in the 'Sched. of Class data missing' tab

Does not include Facilities one off room bookings

Concurrent room bookings included (marginally inflates student count)

Campus Activity Charts
Week Two Snapshot

Frost

Student count

Time	Monday	Tuesday	Wednesday	Thursday	Friday	Avg '1199
8	520	669	478	938	642	649
9	831	748	700	1089	858	845
10	990	774	861	1141	1056	964
11	639	897	715	989	600	768
12	783	661	695	78	931	630
13	898	934	941	943	635	870
14	965	628	959	896	676	825
15	941	757	643	550	567	692
16	279	335	242	175	86	223
17	156	137	161	79	0	133
18	206	108	129	26	0	117
19	92	55	83	0	0	77
20	25	0	0	0	0	25
21	0	0	0	0	0	0
22	0	0	0	0	0	0
Avg	563	559	551	628	672	

Frost

of classes

Time	Monday	Tuesday	Wednesday	Thursday	Friday	Avg '1199
8	15	20	12	28	20	19
9	26	32	24	38	33	31
10	28	32	36	38	31	33
11	21	30	31	35	24	28
12	26	23	30	6	23	22
13	30	28	34	27	24	29
14	32	27	35	29	24	29
15	29	24	25	19	13	22
16	10	12	9	6	4	8
17	5	5	5	3	0	5
18	8	4	5	1	0	5
19	4	2	3	0	0	3
20	1	0	0	0	0	1
21	0	0	0	0	0	0
22	0	0	0	0	0	0
Avg	18	20	21	21	22	

Notes: FC_SPACE_UTL_VW - Space Utilization by Program View

Removed columns ACAD_PROG, FC_PRGM_ENRL, SCHEDULED_HRS, FC_PRGM_RM_UTL

Removed activity that began after September 16, 2019

Removed activity that ended before September 16, 2019

Consolidated Lindsay campus buildings (FROST, HEAVY EQUIPMENT, LAW & ARBOUR, FIELDHOUSE, RESOURCE DRILLING)

Course start time that was not on the hour was rounded down (e.g. 8:20 to 8:00)

Course end time that was not on the hour was rounded up (e.g. 8:20 to 9:00)

Top 10% indicated by red cells and text

Avg '1199 column Top 10% indicated by yellow cells and text

Does not include courses lists in the 'Sched. of Class data missing' tab

Does not include Facilities one off room bookings

Concurrent room bookings included (marginally inflates student count)

Campus Activity Charts
Week Two Snapshot

Cobourg

Student count

Time	Monday	Tuesday	Wednesday	Thursday	Friday	Avg '1199
8	0	0	0	0	0	0
9	15	15	19	6	6	12
10	15	15	19	15	6	14
11	15	15	19	15	6	14
12	6	6	6	6	6	6
13	16	14	16	6	6	12
14	16	14	16	11	6	13
15	10	8	2	5	0	6
16	0	0	0	0	0	0
17	0	0	0	2	0	2
18	0	0	0	2	0	2
19	0	0	0	0	0	0
20	0	0	0	0	0	0
21	0	0	0	0	0	0
22	0	0	0	0	0	0
Avg	13	12	14	8	6	

Cobourg

of classes

Time	Monday	Tuesday	Wednesday	Thursday	Friday	Avg '1199
8	0	0	0	0	0	0
9	10	10	12	9	9	10
10	10	10	12	10	9	10
11	10	10	11	10	9	10
12	9	9	0	9	9	9
13	12	10	0	9	9	10
14	12	10	0	10	9	10
15	3	1	0	1	0	2
16	0	0	0	0	0	0
17	0	0	0	2	0	2
18	0	0	0	2	0	2
19	0	0	0	1	0	1
20	0	0	0	0	0	0
21	0	0	0	0	0	0
22	0	0	0	0	0	0
Avg	9	9	12	6	9	

Notes: FC_SPACE_UTL_VW - Space Utilization by Program View

Removed columns ACAD_PROG, FC_PRGM_ENRL, SCHEDULED_HRS, FC_PRGM_RM_UTL

Removed activity that began after September 16, 2019

Removed activity that ended before September 16, 2019

Course start time that was not on the hour was rounded down (e.g. 8:20 to 8:00)

Course end time that was not on the hour was rounded up (e.g. 8:20 to 9:00)

Top 10% indicated by red cells and text

Avg '1199 column Top 10% indicated by yellow cells and text

Does not include courses lists in the 'Sched. of Class data missing' tab

Does not include Facilities one off room bookings

Concurrent room bookings included (marginally inflates student count)

Campus Activity Charts
Week Two Snapshot

Haliburton

Student count

Time	Monday	Tuesday	Wednesday	Thursday	Friday	Avg '1199
8	0	0	0	0	0	0
9	0	0	0	0	0	0
10	0	0	0	0	0	0
11	0	0	0	0	0	0
12	0	0	0	0	0	0
13	0	0	0	0	0	0
14	0	0	0	0	0	0
15	0	0	0	0	0	0
16	0	0	0	0	0	0
17	0	0	0	0	0	0
18	0	0	0	0	0	0
19	0	0	0	0	0	0
20	0	0	0	0	0	0
21	0	0	0	0	0	0
22	0	0	0	0	0	0
Avg						

Haliburton

of classes

Time	Monday	Tuesday	Wednesday	Thursday	Friday	Avg '1199
8	0	0	0	0	0	0
9	0	0	0	0	0	0
10	0	0	0	0	0	0
11	0	0	0	0	0	0
12	0	0	0	0	0	0
13	0	0	0	0	0	0
14	0	0	0	0	0	0
15	0	0	0	0	0	0
16	0	0	0	0	0	0
17	0	0	0	0	0	0
18	0	0	0	0	0	0
19	0	0	0	0	0	0
20	0	0	0	0	0	0
21	0	0	0	0	0	0
22	0	0	0	0	0	0
Avg						

Notes: FC_SPACE_UTL_VW - Space Utilization by Program View

Removed columns ACAD_PROG, FC_PRGM_ENRL, SCHEDULED_HRS, FC_PRGM_RM_UTL

Removed activity that began after September 16, 2019

Removed activity that ended before September 16, 2019

Course start time that was not on the hour was rounded down (e.g. 8:20 to 8:00)

Course end time that was not on the hour was rounded up (e.g. 8:20 to 9:00)

Top 10% indicated by red cells and text

Avg. '1199 column Top 10% indicated by yellow cells and text

Does not include courses lists in the 'Sched. of Class data missing' tab

Does not include Facilities one off room bookings

Concurrent room bookings included (marginally inflates student count)

Campus Activity Charts
Week Two Snapshot

Off

Student count

Time	Monday	Tuesday	Wednesday	Thursday	Friday	Avg '1199
8	104	172	190	82	173	144
9	87	172	190	82	198	146
10	119	204	236	114	230	181
11	119	208	204	98	189	164
12	119	188	198	98	189	158
13	113	156	157	63	173	132
14	119	194	146	79	189	145
15	119	188	146	79	189	144
16	115	156	191	87	197	149
17	87	178	170	88	198	144
18	87	69	46	53	64	64
19	87	69	46	37	64	61
20	0	0	0	0	0	0
21	0	0	0	0	0	0
22	0	0	0	0	0	0
Avg	106	163	160	80	171	

Off

of classes

Time	Monday	Tuesday	Wednesday	Thursday	Friday	Avg '1199
8	6	8	9	7	9	8
9	5	8	9	7	10	8
10	7	9	13	8	11	10
11	3	6	9	5	7	6
12	3	5	0	5	7	5
13	3	3	0	3	6	4
14	3	5	0	4	7	5
15	3	5	0	4	7	5
16	3	3	0	4	7	4
17	2	4	0	4	7	4
18	2	2	0	2	1	2
19	2	2	0	1	1	2
20	0	0	0	0	0	0
21	0	0	0	0	0	0
22	0	0	0	0	0	0
Avg	4	5	10	5	7	

Notes: FC_SPACE_UTL_VW - Space Utilization by Program View

Removed columns ACAD_PROG, FC_PRGM_ENRL, SCHEDULED_HRS, FC_PRGM_RM_UTL

Removed activity that began after September 16, 2019

Removed activity that ended before September 16, 2019

Consolidated Off campus buildings (OFF, PTBOMUSEUM, & NORWOOD)

Course start time that was not on the hour was rounded down (e.g. 8:20 to 8:00)

Course end time that was not on the hour was rounded up (e.g. 8:20 to 9:00)

Top 10% indicated by red cells and text

Avg '1199 column Top 10% indicated by yellow cells and text

Does not include courses lists in the 'Sched. of Class data missing' tab

Does not include Facilities one off room bookings

Concurrent room bookings included (marginally inflates student count)

Campus Activity Charts
Week Two Snapshot

All Campuses

Student count

Time	Monday	Tuesday	Wednesday	Thursday	Friday	Avg '1199
8	2204	2392	2288	2625	2285	2359
9	2527	2375	2601	2920	2823	2649
10	2988	2879	2899	3119	3272	3031
11	2493	2911	2856	3033	2764	2811
12	2746	2964	2731	2321	2993	2751
13	2928	3162	3041	3083	2528	2948
14	2787	2955	3100	3079	2795	2943
15	1213	2878	2705	2571	2791	2432
16	2159	2291	2289	1731	1880	2070
17	1976	1771	1790	1880	1421	1768
18	1707	1412	1262	1473	134	1198
19	1068	938	773	854	64	739
20	86	178	123	93	0	120
21	19	0	123	72	0	71
22	0	0	0	0	0	0
Avg	1922	2239	2042	2061	2146	

All Campuses

of classes

Time	Monday	Tuesday	Wednesday	Thursday	Friday	Avg '1199
8	80	83	79	92	85	84
9	105	113	112	122	122	115
10	112	127	129	130	127	125
11	100	116	120	122	114	114
12	107	113	100	102	108	106
13	116	112	103	122	103	111
14	107	117	101	127	111	113
15	47	102	91	104	94	88
16	80	86	69	75	74	77
17	72	68	57	76	52	65
18	59	56	46	61	3	45
19	35	43	29	39	1	29
20	5	9	6	4	0	6
21	1	1	6	3	0	3
22	0	0	0	0	0	0
Avg	73	82	75	84	83	

Notes: FC_SPACE_UTL_VW - Space Utilization by Program View

Removed columns ACAD_PROG, FC_PRGM_ENRL, SCHEDULED_HRS, FC_PRGM_RM_UTL

Removed activity that began after September 16, 2019

Removed activity that ended before September 16, 2019

Summation of all activity (SUTHERLAND, FROST, COBOURG, HALIBURTON, OFF)

Course start time that was not on the hour was rounded down (e.g. 8:20 to 8:00)

Course end time that was not on the hour was rounded up (e.g. 8:20 to 9:00)

Top 10% indicated by red cells and text

Avg '1199 column Top 10% indicated by yellow cells and text

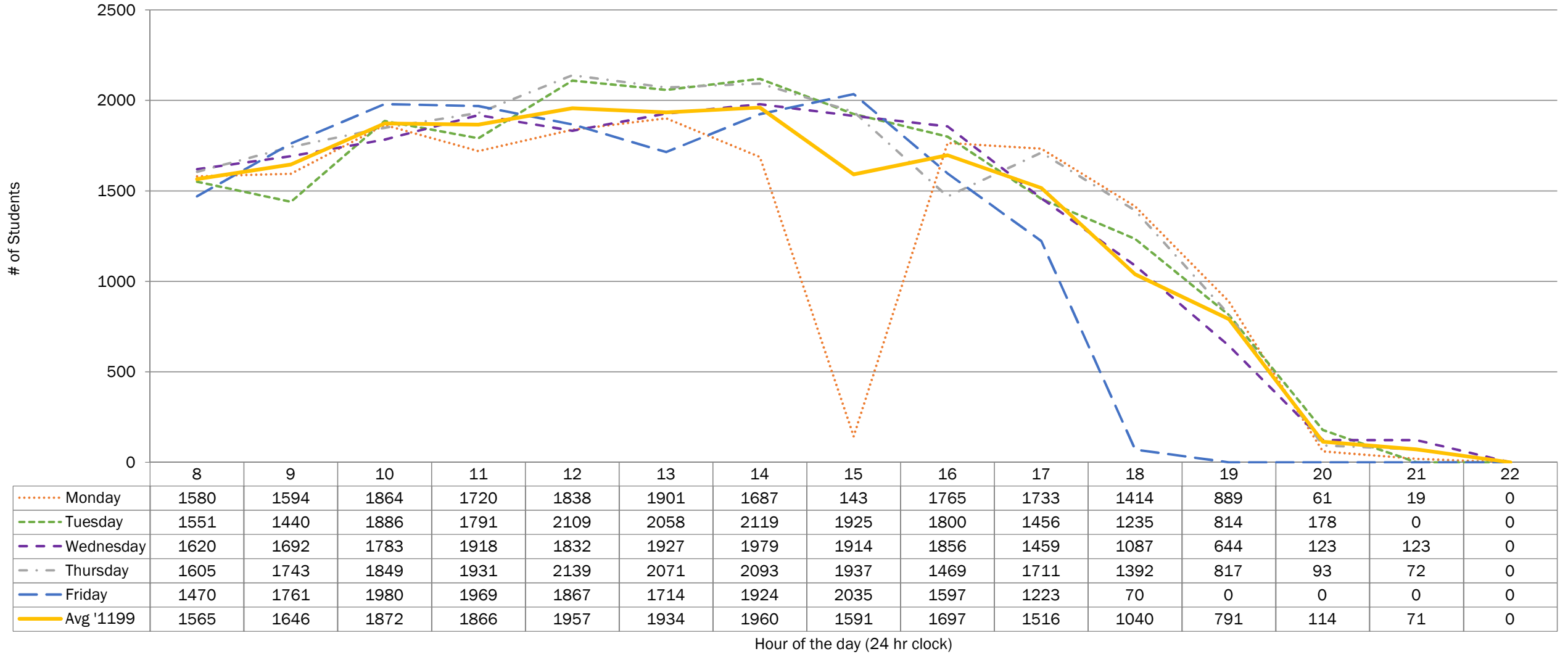
Does not include courses lists in the 'Sched. of Class data missing' tab

Does not include Facilities one off room bookings

Concurrent room bookings included (marginally inflates student count)

Fall 2019 (1199) Student Activity - Sutherland Campus Week Two Snapshot

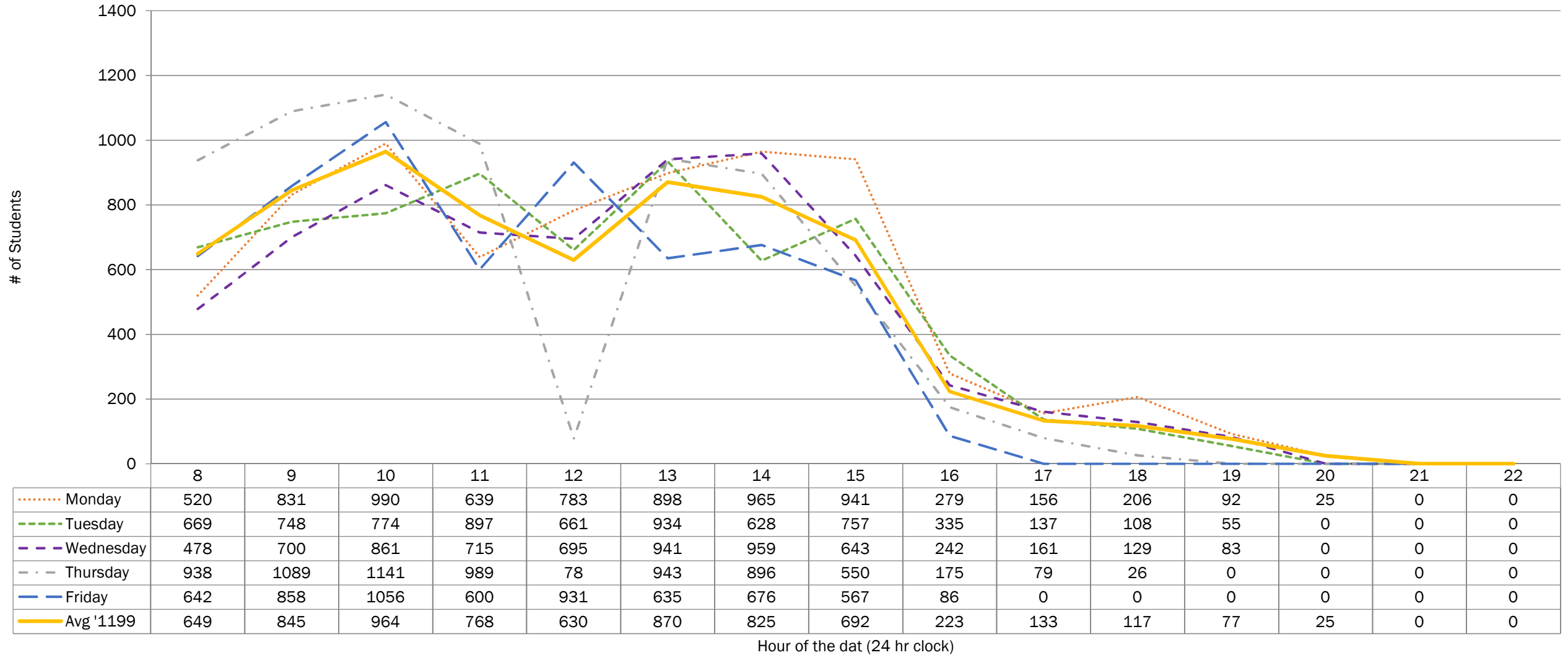
Includes building(s): BREALEY, WELLNESS, ST. JOSEPHS, & KTTC



..... Monday
 - - - - Tuesday
 - - - - Wednesday
 - - - - Thursday
 - - - - Friday
 ———— Avg '1199

Fall 2019 (1199) Student Activity - Frost Campus Week Two Snapshot

Includes building(s): FROST, HEAVY EQUIPMENT, LAW & ARBOUR, FIELDHOUSE, & RESOURCE DRILLING

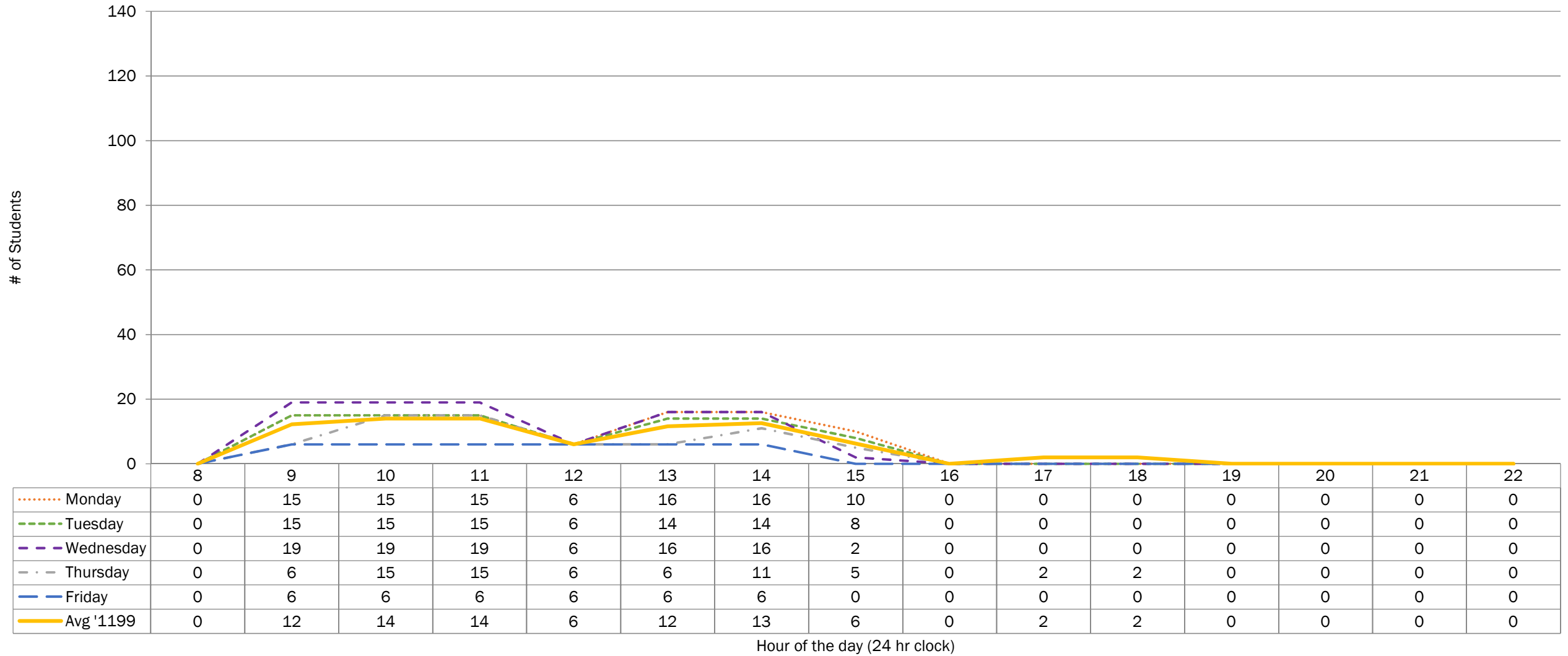


----- Monday
 ----- Tuesday
 ----- Wednesday
 ----- Thursday
 ----- Friday
 ----- Avg '1199

Fall 2019 (1199) Student Activity - Cobourg Campus

Week Two Snapshot

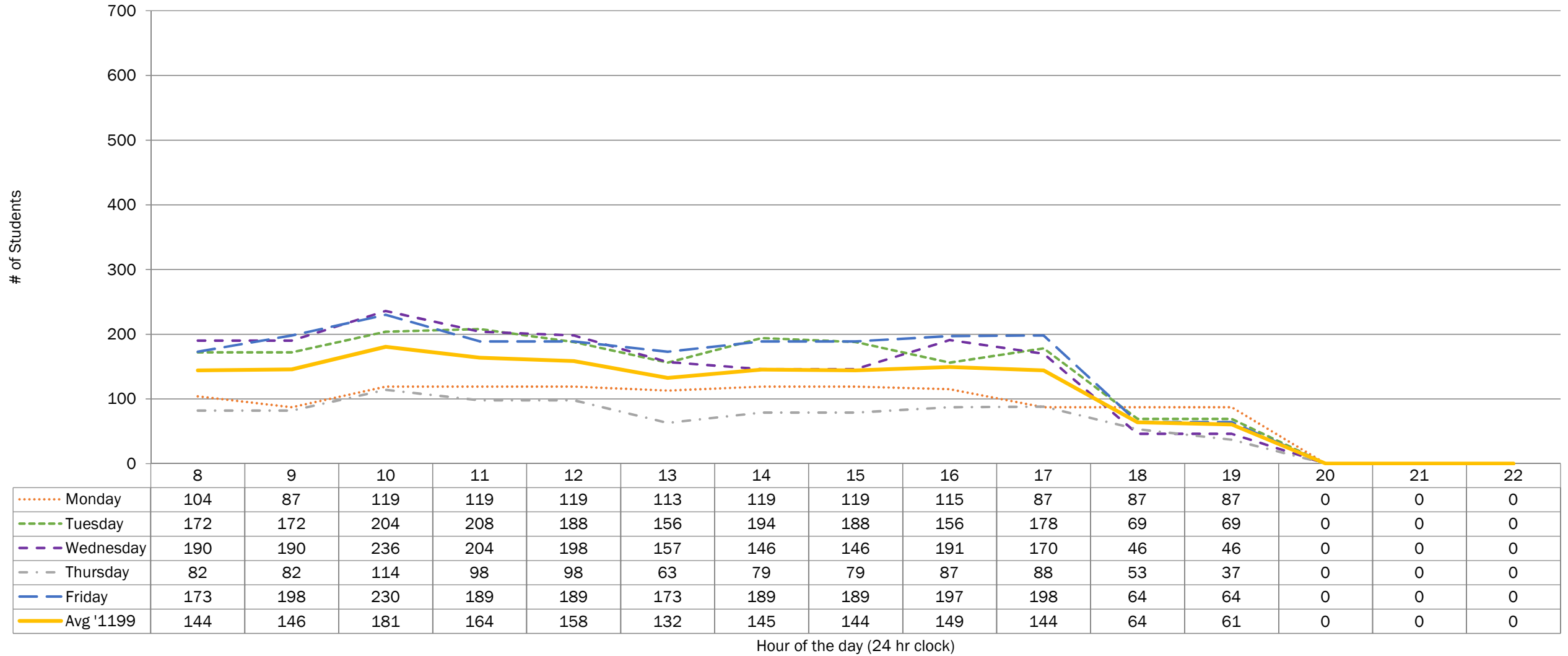
Includes building(s): COBOURG



Monday Tuesday Wednesday Thursday Friday Avg '1199

Fall 2019 (1199) Student Activity - Off Campus Week Two Snapshot

Includes building(s): OFF, PTBOMUSEUM, & NORWOOD

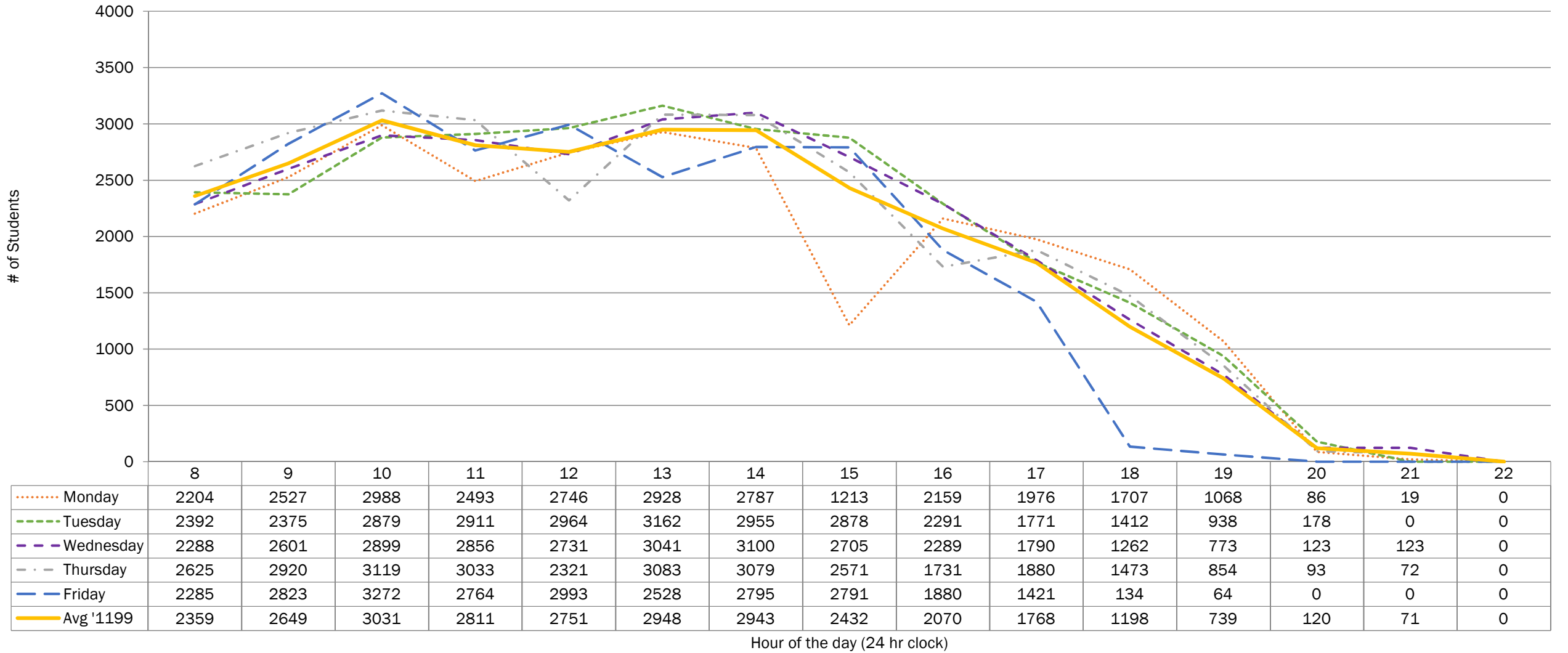


..... Monday
 - - - - Tuesday
 - - - - Wednesday
 - . - . Thursday
 - - - - Friday
 ———— Avg '1199

Fall 2019 (1199) Student Activity - All Campuses

Week Two Snapshot

SUTHERLAND, FROST, COBOURG, HALIBURTON, & OFF



..... Monday
 - - - - Tuesday
 - - - - Wednesday
 - . - . Thursday
 - - - - Friday
 ———— Avg '1199