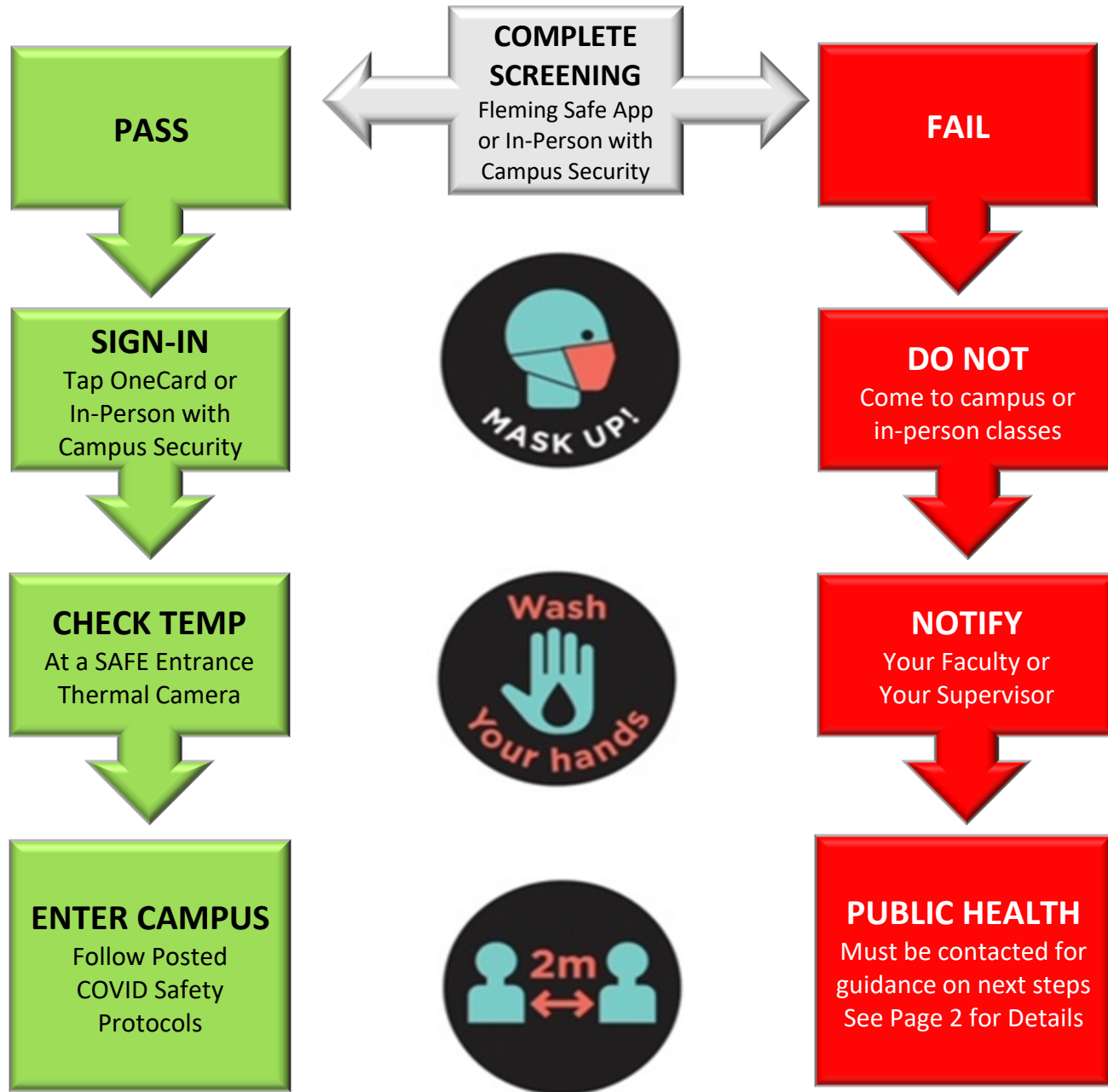


# SCREENING & ACCESS FLOW CHART



**PUBLIC HEALTH  
GUIDANCE OPTIONS**

**ONLINE  
ASSESSMENT  
& REFERRAL**  
Click Here

**Ontario Government - Assessment and Referral Form**

<https://covid-19.ontario.ca/self-assessment/>

**Ontario Government - Local Health Unit Contact List**

<http://www.health.gov.on.ca/en/common/system/services/phu/locations.aspx>

**PHONE LOCAL  
HEALTH UNIT**  
Click Here

**FOLLOW THE  
GUIDANCE  
PROVIDED**

**FOLLOW THE  
GUIDANCE  
PROVIDED**

**COMPLETE  
COLLEGE  
COVID  
REPORT**

**Fleming College - COVID Illness & Exposure Reporting Form**

<https://department.flemingcollege.ca/safety/on-campus-illness-reporting/>

**COMPLETE  
COLLEGE  
COVID REPORT  
FORM**

**Questions or Concerns**

**Campus Security**

24 hours a day

Phone: 705-749-5530 ext 8000

**John Gallen, Manager Security & Parking**

Mon-Fri - 8am-4pm

Email: [john.gallen@flemingcollege.ca](mailto:john.gallen@flemingcollege.ca)

Phone: 705-749-5530 ext 1191

**FOLLOW-UP**

You will be contacted by the  
College regarding the next  
steps in supporting your return  
to campus

**FOLLOW-UP**

You will be contacted by the  
College regarding the next  
steps in supporting your  
return to campus